

TEST REPORT

Applicant: Shenzhen Huafurui Technology Co., Ltd.
Address: Unit 1401 & 1402, 14/F, Jinqi Zhigu Mansion (No. 4 Building of Chongwen Garden), Crossing of the Liuxian Street and Tangling Road, Taoyuan Street, Nanshan District, Shenzhen, P.R. China

The following sample(s) was/were submitted and identified on behalf of the client as:

Product name: Smartphone
Model: KINGKONG 5 Pro
Trade mark: CUBOT
Manufacturer: Shenzhen Huafurui Technology Co., Ltd.
Address: Unit 1401 & 1402, 14/F, Jinqi Zhigu Mansion (No. 4 Building of Chongwen Garden), Crossing of the Liuxian Street and Tangling Road, Taoyuan Street, Nanshan District, Shenzhen, P.R. China
Factory: Shenzhen Huafurui Technology Co., Ltd.
Address: Unit 1401 & 1402, 14/F, Jinqi Zhigu Mansion (No. 4 Building of Chongwen Garden), Crossing of the Liuxian Street and Tangling Road, Taoyuan Street, Nanshan District, Shenzhen, P.R. China

Sample Received Date: Feb. 02, 2021
Testing Period: Feb. 02, 2021~ Mar. 18, 2021

Test Requirement:

As specified by client, to determine the Lead(Pb), Cadmium(Cd), Mercury(Hg), Hexavalent Chromium(Cr(VI)), Polybrominated Biphenyls(PBBs), Polybrominated, Diphenyl Ethers(PBDEs), Bis-(2-ethylhexyl) Phthalate (DEHP), Benzyl butyl Phthalate (BBP), Dibutyl Phthalate (DBP) and Diisobutyl Phthalate(DIBP) contents in the submitted sample in accordance with RoHS directive 2011/65/EU and the amendment directive (EU) 2015/863.

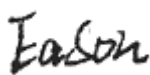
Conclusion:

Pass

Test Result(s): Please refer to the following page(s);

Test Method: Please refer to the following page(s);

Compiled by: _____



Reviewed by: _____



Approved by: _____



Date: _____

2021-03-22

Test Result(s):

1.Shell

Part No.	Part Description	Test Items	XRF Screening Result(mg/kg)	Chemical Test Result(mg/kg)	Conclusion
1	Black plastic shell	Pb	BL	/	Pass
		Cd	BL	/	
		Hg	BL	/	
		Cr(Cr(VI))	BL	/	
		Br(PBBs&PBDEs)	IN	N.D.	
		DIBP	/	N.D.	
		DEHP	/	N.D.	
		BBP	/	N.D.	
		DBP	/	N.D.	
2	Transparent film	Pb	BL	/	Pass
		Cd	BL	/	
		Hg	BL	/	
		Cr(Cr(VI))	BL	/	
		Br(PBBs&PBDEs)	BL	/	
		DIBP	/	N.D.	
		DEHP	/	N.D.	
		BBP	/	N.D.	
		DBP	/	N.D.	
3	Black glass	Pb	BL	/	Pass
		Cd	BL	/	
		Hg	BL	/	
		Cr(Cr(VI))	BL	/	
		Br(PBBs&PBDEs)	BL	/	
		DIBP	/	N.D.	
		DEHP	/	N.D.	
		BBP	/	N.D.	
		DBP	/	N.D.	

4	Transparent plastic	Pb	BL	/	Pass
		Cd	BL	/	
		Hg	BL	/	
		Cr(Cr(VI))	BL	/	
		Br(PBBs&PBDEs)	BL	/	
		DIBP	/	N.D.	
		DEHP	/	N.D.	
		BBP	/	N.D.	
5	Black plate	Pb	BL	/	Pass
		Cd	BL	/	
		Hg	BL	/	
		Cr(Cr(VI))	BL	/	
		Br(PBBs&PBDEs)	BL	/	
		DIBP	/	N.D.	
		DEHP	/	N.D.	
		BBP	/	N.D.	
6	Black cap plug	Pb	BL	/	Pass
		Cd	BL	/	
		Hg	BL	/	
		Cr(Cr(VI))	BL	/	
		Br(PBBs&PBDEs)	BL	/	
		DIBP	/	N.D.	
		DEHP	/	N.D.	
		BBP	/	N.D.	
7	Orange plastic inner shell	Pb	BL	/	Pass
		Cd	BL	/	
		Hg	BL	/	
		Cr(Cr(VI))	BL	/	
		Br(PBBs&PBDEs)	IN	N.D.	
		DIBP	/	N.D.	
		DEHP	/	N.D.	
		BBP	/	N.D.	
DBP	/	N.D.			

8	Copper metal nut	Pb	OL	24950 ^{#1}	Pass
		Cd	IN	17	
		Hg	BL	/	
		Cr(Cr(VI))	BL	/	
		Br(PBBs&PBDEs)	/	/	
		DIBP	/	/	
		DEHP	/	/	
		BBP	/	/	
9	Black foam pads	Pb	BL	/	Pass
		Cd	BL	/	
		Hg	BL	/	
		Cr(Cr(VI))	BL	/	
		Br(PBBs&PBDEs)	BL	/	
		DIBP	/	N.D.	
		DEHP	/	N.D.	
		BBP	/	N.D.	
10	Double faced adhesive tape	Pb	BL	/	Pass
		Cd	BL	/	
		Hg	BL	/	
		Cr(Cr(VI))	BL	/	
		Br(PBBs&PBDEs)	BL	/	
		DIBP	/	N.D.	
		DEHP	/	N.D.	
		BBP	/	N.D.	
11	Black insulation film	Pb	BL	/	Pass
		Cd	BL	/	
		Hg	BL	/	
		Cr(Cr(VI))	BL	/	
		Br(PBBs&PBDEs)	BL	/	
		DIBP	/	N.D.	
		DEHP	/	N.D.	
		BBP	/	N.D.	
DBP	/	N.D.			

12	Button - black coating	Pb	BL	/	Pass
		Cd	BL	/	
		Hg	BL	/	
		Cr(Cr(VI))	BL	/	
		Br(PBBs&PBDEs)	BL	/	
		DIBP	/	N.D.	
		DEHP	/	N.D.	
		BBP	/	N.D.	
		DBP	/	N.D.	
13	Button - plastic base material	Pb	BL	/	Pass
		Cd	BL	/	
		Hg	BL	/	
		Cr(Cr(VI))	BL	/	
		Br(PBBs&PBDEs)	BL	/	
		DIBP	/	N.D.	
		DEHP	/	N.D.	
		BBP	/	N.D.	
		DBP	/	N.D.	
14	Black rubber button 1	Pb	BL	/	Pass
		Cd	BL	/	
		Hg	BL	/	
		Cr(Cr(VI))	BL	/	
		Br(PBBs&PBDEs)	BL	/	
		DIBP	/	N.D.	
		DEHP	/	N.D.	
		BBP	/	N.D.	
		DBP	/	N.D.	
15	Black rubber button 2	Pb	BL	/	Pass
		Cd	BL	/	
		Hg	BL	/	
		Cr(Cr(VI))	BL	/	
		Br(PBBs&PBDEs)	BL	/	
		DIBP	/	N.D.	
		DEHP	/	N.D.	
		BBP	/	N.D.	
		DBP	/	N.D.	

16	Black rubber button 3	Pb	BL	/	Pass
		Cd	BL	/	
		Hg	BL	/	
		Cr(Cr(VI))	BL	/	
		Br(PBBs&PBDEs)	BL	/	
		DIBP	/	N.D.	
		DEHP	/	N.D.	
		BBP	/	N.D.	
17	Silvery metal plate	Pb	BL	/	Pass
		Cd	BL	/	
		Hg	BL	/	
		Cr(Cr(VI))	IN	N.D.	
		Br(PBBs&PBDEs)	/	/	
		DIBP	/	/	
		DEHP	/	/	
		BBP	/	/	
18	Black tape	Pb	BL	/	Pass
		Cd	BL	/	
		Hg	BL	/	
		Cr(Cr(VI))	BL	/	
		Br(PBBs&PBDEs)	BL	/	
		DIBP	/	N.D.	
		DEHP	/	N.D.	
		BBP	/	N.D.	
19	Metal shrapnel	Pb	BL	/	Pass
		Cd	BL	/	
		Hg	BL	/	
		Cr(Cr(VI))	IN	N.D.	
		Br(PBBs&PBDEs)	/	/	
		DIBP	/	/	
		DEHP	/	/	
		BBP	/	/	
DBP	/	/			

20	FPC	Pb	BL	/	Pass
		Cd	BL	/	
		Hg	BL	/	
		Cr(Cr(VI))	BL	/	
		Br(PBBs&PBDEs)	BL	/	
		DIBP	/	N.D.	
		DEHP	/	N.D.	
		BBP	/	N.D.	
		DBP	/	N.D.	
21	Black metal fingerprint buttons	Pb	BL	/	Pass
		Cd	BL	/	
		Hg	BL	/	
		Cr(Cr(VI))	BL	/	
		Br(PBBs&PBDEs)	BL	/	
		DIBP	/	N.D.	
		DEHP	/	N.D.	
		BBP	/	N.D.	
		DBP	/	N.D.	
22	Silvery gray metal plate	Pb	IN	436	Pass
		Cd	IN	N.D.	
		Hg	BL	/	
		Cr(Cr(VI))	IN	N.D.	
		Br(PBBs&PBDEs)	/	/	
		DIBP	/	/	
		DEHP	/	/	
		BBP	/	/	
		DBP	/	/	
23	Silvery metal screw 1	Pb	BL	/	Pass
		Cd	BL	/	
		Hg	BL	/	
		Cr(Cr(VI))	BL	/	
		Br(PBBs&PBDEs)	/	/	
		DIBP	/	/	
		DEHP	/	/	
		BBP	/	/	
		DBP	/	/	

24	Silvery metal screw 2	Pb	BL	/	Pass
		Cd	BL	/	
		Hg	BL	/	
		Cr(Cr(VI))	BL	/	
		Br(PBBs&PBDEs)	/	/	
		DIBP	/	/	
		DEHP	/	/	
		DBP	/	/	
25	Black metal screw 1	Pb	BL	/	Pass
		Cd	BL	/	
		Hg	BL	/	
		Cr(Cr(VI))	IN	N.D.	
		Br(PBBs&PBDEs)	/	/	
		DIBP	/	/	
		DEHP	/	/	
		DBP	/	/	
26	Black metal screw 2	Pb	BL	/	Pass
		Cd	BL	/	
		Hg	BL	/	
		Cr(Cr(VI))	IN	N.D.	
		Br(PBBs&PBDEs)	/	/	
		DIBP	/	/	
		DEHP	/	/	
		DBP	/	/	

2. Screen

27	Screen	Pb	BL	/	Pass
		Cd	BL	/	
		Hg	BL	/	
		Cr(Cr(VI))	BL	/	
		Br(PBBs&PBDEs)	BL	/	
		DIBP	/	N.D.	
		DEHP	/	N.D.	
		DBP	/	N.D.	

28	Silvery metal plate	Pb	BL	/	Pass
		Cd	BL	/	
		Hg	BL	/	
		Cr(Cr(VI))	IN	N.D.	
		Br(PBBs&PBDEs)	/	/	
		DIBP	/	/	
		DEHP	/	/	
		DBP	/	/	
29	White plastic frame	Pb	BL	/	Pass
		Cd	BL	/	
		Hg	BL	/	
		Cr(Cr(VI))	BL	/	
		Br(PBBs&PBDEs)	BL	/	
		DIBP	/	N.D.	
		DEHP	/	N.D.	
		DBP	/	N.D.	
30	White plastic sheet	Pb	BL	/	Pass
		Cd	BL	/	
		Hg	BL	/	
		Cr(Cr(VI))	BL	/	
		Br(PBBs&PBDEs)	BL	/	
		DIBP	/	N.D.	
		DEHP	/	N.D.	
		DBP	/	N.D.	
31	Transparent plastic board	Pb	BL	/	Pass
		Cd	BL	/	
		Hg	BL	/	
		Cr(Cr(VI))	BL	/	
		Br(PBBs&PBDEs)	BL	/	
		DIBP	/	N.D.	
		DEHP	/	N.D.	
		DBP	/	N.D.	

32	Frosted white plastic	Pb	BL	/	Pass
		Cd	BL	/	
		Hg	BL	/	
		Cr(Cr(VI))	BL	/	
		Br(PBBs&PBDEs)	BL	/	
		DIBP	/	N.D.	
		DEHP	/	N.D.	
		BBP	/	N.D.	
33	Silvery plastic sheet	Pb	BL	/	Pass
		Cd	BL	/	
		Hg	BL	/	
		Cr(Cr(VI))	BL	/	
		Br(PBBs&PBDEs)	BL	/	
		DIBP	/	N.D.	
		DEHP	/	N.D.	
		BBP	/	N.D.	
34	Transparent film	Pb	BL	/	Pass
		Cd	BL	/	
		Hg	BL	/	
		Cr(Cr(VI))	BL	/	
		Br(PBBs&PBDEs)	BL	/	
		DIBP	/	N.D.	
		DEHP	/	N.D.	
		BBP	/	N.D.	
35	LED	Pb	BL	/	Pass
		Cd	BL	/	
		Hg	BL	/	
		Cr(Cr(VI))	BL	/	
		Br(PBBs&PBDEs)	BL	/	
		DIBP	/	N.D.	
		DEHP	/	N.D.	
		BBP	/	N.D.	
DBP	/	N.D.			

36	FPC	Pb	BL	/	Pass
		Cd	BL	/	
		Hg	BL	/	
		Cr(Cr(VI))	BL	/	
		Br(PBBs&PBDEs)	BL	/	
		DIBP	/	N.D.	
		DEHP	/	N.D.	
		BBP	/	N.D.	
		DBP	/	N.D.	
37	IC	Pb	BL	/	Pass
		Cd	BL	/	
		Hg	BL	/	
		Cr(Cr(VI))	BL	/	
		Br(PBBs&PBDEs)	BL	/	
		DIBP	/	N.D.	
		DEHP	/	N.D.	
		BBP	/	N.D.	
		DBP	/	N.D.	
38	Black tape	Pb	BL	/	Pass
		Cd	BL	/	
		Hg	BL	/	
		Cr(Cr(VI))	BL	/	
		Br(PBBs&PBDEs)	BL	/	
		DIBP	/	N.D.	
		DEHP	/	N.D.	
		BBP	/	N.D.	
		DBP	/	N.D.	
39	White PCB	Pb	BL	/	Pass
		Cd	BL	/	
		Hg	BL	/	
		Cr(Cr(VI))	BL	/	
		Br(PBBs&PBDEs)	BL	/	
		DIBP	/	N.D.	
		DEHP	/	N.D.	
		BBP	/	N.D.	
		DBP	/	N.D.	

40	SMD capacitor	Pb	BL	/	Pass
		Cd	BL	/	
		Hg	BL	/	
		Cr(Cr(VI))	BL	/	
		Br(PBBs&PBDEs)	BL	/	
		DIBP	/	N.D.	
		DEHP	/	N.D.	
		BBP	/	N.D.	
		DBP	/	N.D.	
41	Silvery grey foam	Pb	BL	/	Pass
		Cd	BL	/	
		Hg	BL	/	
		Cr(Cr(VI))	BL	/	
		Br(PBBs&PBDEs)	BL	/	
		DIBP	/	N.D.	
		DEHP	/	N.D.	
		BBP	/	N.D.	
		DBP	/	N.D.	
42	Silver grey tape	Pb	BL	/	Pass
		Cd	BL	/	
		Hg	BL	/	
		Cr(Cr(VI))	BL	/	
		Br(PBBs&PBDEs)	BL	/	
		DIBP	/	N.D.	
		DEHP	/	N.D.	
		BBP	/	N.D.	
		DBP	/	N.D.	
43	Black rubber	Pb	BL	/	Pass
		Cd	BL	/	
		Hg	BL	/	
		Cr(Cr(VI))	BL	/	
		Br(PBBs&PBDEs)	BL	/	
		DIBP	/	N.D.	
		DEHP	/	N.D.	
		BBP	/	N.D.	
		DBP	/	N.D.	

44	Black plastic of black interface	Pb	BL	/	Pass
		Cd	BL	/	
		Hg	BL	/	
		Cr(Cr(VI))	BL	/	
		Br(PBBs&PBDEs)	BL	/	
		DIBP	/	N.D.	
		DEHP	/	N.D.	
		BBP	/	N.D.	
		DBP	/	N.D.	
45	Metal contact of black interface	Pb	BL	/	Pass
		Cd	BL	/	
		Hg	BL	/	
		Cr(Cr(VI))	BL	/	
		Br(PBBs&PBDEs)	/	/	
		DIBP	/	/	
		DEHP	/	/	
		BBP	/	/	
		DBP	/	/	

3. Large loudspeaker

46	Black plastic shell	Pb	BL	/	Pass
		Cd	BL	/	
		Hg	BL	/	
		Cr(Cr(VI))	BL	/	
		Br(PBBs&PBDEs)	BL	/	
		DIBP	/	N.D.	
		DEHP	/	N.D.	
		BBP	/	N.D.	
		DBP	/	N.D.	
47	Black FPC	Pb	BL	/	Pass
		Cd	BL	/	
		Hg	BL	/	
		Cr(Cr(VI))	BL	/	
		Br(PBBs&PBDEs)	BL	/	
		DIBP	/	N.D.	
		DEHP	/	N.D.	
		BBP	/	N.D.	
		DBP	/	N.D.	

48	Yellow FPC	Pb	BL	/	Pass
		Cd	BL	/	
		Hg	BL	/	
		Cr(Cr(VI))	BL	/	
		Br(PBBs&PBDEs)	BL	/	
		DIBP	/	N.D.	
		DEHP	/	N.D.	
		BBP	/	N.D.	
49	Yellow electronic components	Pb	BL	/	Pass
		Cd	BL	/	
		Hg	BL	/	
		Cr(Cr(VI))	BL	/	
		Br(PBBs&PBDEs)	BL	/	
		DIBP	/	N.D.	
		DEHP	/	N.D.	
		BBP	/	N.D.	
50	Black rubber pad 1	Pb	BL	/	Pass
		Cd	BL	/	
		Hg	BL	/	
		Cr(Cr(VI))	BL	/	
		Br(PBBs&PBDEs)	BL	/	
		DIBP	/	N.D.	
		DEHP	/	N.D.	
		BBP	/	N.D.	
51	Black rubber pad 2	Pb	BL	/	Pass
		Cd	BL	/	
		Hg	BL	/	
		Cr(Cr(VI))	BL	/	
		Br(PBBs&PBDEs)	BL	/	
		DIBP	/	N.D.	
		DEHP	/	N.D.	
		BBP	/	N.D.	
DBP	/	N.D.			

52	Silvery metal shell	Pb	BL	/	Pass
		Cd	BL	/	
		Hg	BL	/	
		Cr(Cr(VI))	BL	/	
		Br(PBBs&PBDEs)	BL	/	
		DIBP	/	N.D.	
		DEHP	/	N.D.	
		BBP	/	N.D.	
53	Black plastic shell	Pb	BL	/	Pass
		Cd	BL	/	
		Hg	BL	/	
		Cr(Cr(VI))	BL	/	
		Br(PBBs&PBDEs)	/	/	
		DIBP	/	/	
		DEHP	/	/	
		BBP	/	/	
54	Magnet	Pb	BL	/	Pass
		Cd	BL	/	
		Hg	BL	/	
		Cr(Cr(VI))	BL	/	
		Br(PBBs&PBDEs)	/	/	
		DIBP	/	/	
		DEHP	/	/	
		BBP	/	/	
55	Sound basin	Pb	BL	/	Pass
		Cd	BL	/	
		Hg	BL	/	
		Cr(Cr(VI))	BL	/	
		Br(PBBs&PBDEs)	BL	/	
		DIBP	/	N.D.	
		DEHP	/	N.D.	
		BBP	/	N.D.	
DBP	/	N.D.			

56	Voice coil	Pb	BL	/	Pass
		Cd	BL	/	
		Hg	BL	/	
		Cr(Cr(VI))	BL	/	
		Br(PBBs&PBDEs)	BL	/	
		DIBP	/	N.D.	
		DEHP	/	N.D.	
		BBP	/	N.D.	
57	Transparent plastic	Pb	BL	/	Pass
		Cd	BL	/	
		Hg	BL	/	
		Cr(Cr(VI))	BL	/	
		Br(PBBs&PBDEs)	BL	/	
		DIBP	/	N.D.	
		DEHP	/	N.D.	
		BBP	/	N.D.	
DBP	/	N.D.			

4. Small loudspeaker

58	Silvery metal shell	Pb	BL	/	Pass
		Cd	BL	/	
		Hg	BL	/	
		Cr(Cr(VI))	BL	/	
		Br(PBBs&PBDEs)	/	/	
		DIBP	/	/	
		DEHP	/	/	
		BBP	/	/	
59	White colloid	Pb	BL	/	Pass
		Cd	BL	/	
		Hg	BL	/	
		Cr(Cr(VI))	BL	/	
		Br(PBBs&PBDEs)	BL	/	
		DIBP	/	N.D.	
		DEHP	/	N.D.	
		BBP	/	N.D.	
DBP	/	N.D.			

60	Silvery metal shell	Pb	BL	/	Pass
		Cd	BL	/	
		Hg	BL	/	
		Cr(Cr(VI))	BL	/	
		Br(PBBs&PBDEs)	/	/	
		DIBP	/	/	
		DEHP	/	/	
		DBP	/	/	
61	Magnet	Pb	BL	/	Pass
		Cd	BL	/	
		Hg	BL	/	
		Cr(Cr(VI))	BL	/	
		Br(PBBs&PBDEs)	/	/	
		DIBP	/	/	
		DEHP	/	/	
		DBP	/	/	
62	Sound basin	Pb	BL	/	Pass
		Cd	BL	/	
		Hg	BL	/	
		Cr(Cr(VI))	BL	/	
		Br(PBBs&PBDEs)	BL	/	
		DIBP	/	N.D.	
		DEHP	/	N.D.	
		DBP	/	N.D.	
63	Voice coil	Pb	BL	/	Pass
		Cd	BL	/	
		Hg	BL	/	
		Cr(Cr(VI))	BL	/	
		Br(PBBs&PBDEs)	BL	/	
		DIBP	/	N.D.	
		DEHP	/	N.D.	
		DBP	/	N.D.	

64	Transparent plastic	Pb	BL	/	Pass
		Cd	BL	/	
		Hg	BL	/	
		Cr(Cr(VI))	BL	/	
		Br(PBBs&PBDEs)	BL	/	
		DIBP	/	N.D.	
		DEHP	/	N.D.	
		BBP	/	N.D.	
65	Black fabric net	Pb	BL	/	Pass
		Cd	BL	/	
		Hg	BL	/	
		Cr(Cr(VI))	BL	/	
		Br(PBBs&PBDEs)	BL	/	
		DIBP	/	N.D.	
		DEHP	/	N.D.	
		BBP	/	N.D.	
DBP	/	N.D.			

5. Camera 1

66	Silvery metal shell	Pb	BL	/	Pass
		Cd	BL	/	
		Hg	BL	/	
		Cr(Cr(VI))	BL	/	
		Br(PBBs&PBDEs)	/	/	
		DIBP	/	/	
		DEHP	/	/	
		BBP	/	/	
67	Magnet	Pb	BL	/	Pass
		Cd	BL	/	
		Hg	BL	/	
		Cr(Cr(VI))	BL	/	
		Br(PBBs&PBDEs)	/	/	
		DIBP	/	/	
		DEHP	/	/	
		BBP	/	/	
DBP	/	/			

68	Black plastic shell	Pb	BL	/	Pass
		Cd	BL	/	
		Hg	BL	/	
		Cr(Cr(VI))	BL	/	
		Br(PBBs&PBDEs)	BL	/	
		DIBP	/	N.D.	
		DEHP	/	N.D.	
		BBP	/	N.D.	
69	Coil	Pb	BL	/	Pass
		Cd	BL	/	
		Hg	BL	/	
		Cr(Cr(VI))	BL	/	
		Br(PBBs&PBDEs)	/	/	
		DIBP	/	/	
		DEHP	/	/	
		BBP	/	/	
70	Lens	Pb	BL	/	Pass
		Cd	BL	/	
		Hg	BL	/	
		Cr(Cr(VI))	BL	/	
		Br(PBBs&PBDEs)	BL	/	
		DIBP	/	N.D.	
		DEHP	/	N.D.	
		BBP	/	N.D.	
71	CMOS sensitive components	Pb	BL	/	Pass
		Cd	BL	/	
		Hg	BL	/	
		Cr(Cr(VI))	BL	/	
		Br(PBBs&PBDEs)	BL	/	
		DIBP	/	N.D.	
		DEHP	/	N.D.	
		BBP	/	N.D.	
DBP	/	N.D.			

72	SMD capacitor	Pb	BL	/	Pass
		Cd	BL	/	
		Hg	BL	/	
		Cr(Cr(VI))	BL	/	
		Br(PBBs&PBDEs)	BL	/	
		DIBP	/	N.D.	
		DEHP	/	N.D.	
		BBP	/	N.D.	
		DBP	/	N.D.	
73	FPC	Pb	BL	/	Pass
		Cd	BL	/	
		Hg	BL	/	
		Cr(Cr(VI))	BL	/	
		Br(PBBs&PBDEs)	BL	/	
		DIBP	/	N.D.	
		DEHP	/	N.D.	
		BBP	/	N.D.	
		DBP	/	N.D.	
74	Black foam	Pb	BL	/	Pass
		Cd	BL	/	
		Hg	BL	/	
		Cr(Cr(VI))	BL	/	
		Br(PBBs&PBDEs)	BL	/	
		DIBP	/	N.D.	
		DEHP	/	N.D.	
		BBP	/	N.D.	
		DBP	/	N.D.	
75	Grey plastic	Pb	BL	/	Pass
		Cd	BL	/	
		Hg	BL	/	
		Cr(Cr(VI))	BL	/	
		Br(PBBs&PBDEs)	/	/	
		DIBP	/	N.D.	
		DEHP	/	N.D.	
		BBP	/	N.D.	
		DBP	/	N.D.	

76	Transparent glass	Pb	BL	/	Pass
		Cd	BL	/	
		Hg	BL	/	
		Cr(Cr(VI))	BL	/	
		Br(PBBs&PBDEs)	BL	/	
		DIBP	/	N.D.	
		DEHP	/	N.D.	
		BBP	/	N.D.	
77	Silver grey tape	Pb	BL	/	Pass
		Cd	BL	/	
		Hg	BL	/	
		Cr(Cr(VI))	BL	/	
		Br(PBBs&PBDEs)	BL	/	
		DIBP	/	N.D.	
		DEHP	/	N.D.	
		BBP	/	N.D.	
78	Black foam	Pb	BL	/	Pass
		Cd	BL	/	
		Hg	BL	/	
		Cr(Cr(VI))	BL	/	
		Br(PBBs&PBDEs)	BL	/	
		DIBP	/	N.D.	
		DEHP	/	N.D.	
		BBP	/	N.D.	
		DBP	/	N.D.	

6. Camera 2

79	Silvery metal shell	Pb	BL	/	Pass
		Cd	BL	/	
		Hg	BL	/	
		Cr(Cr(VI))	BL	/	
		Br(PBBs&PBDEs)	/	/	
		DIBP	/	/	
		DEHP	/	/	
		BBP	/	/	
		DBP	/	/	

80	Magnet	Pb	BL	/	Pass
		Cd	BL	/	
		Hg	BL	/	
		Cr(Cr(VI))	BL	/	
		Br(PBBs&PBDEs)	/	/	
		DIBP	/	/	
		DEHP	/	/	
		BBP	/	/	
81	Black plastic shell 1	Pb	BL	/	Pass
		Cd	BL	/	
		Hg	BL	/	
		Cr(Cr(VI))	BL	/	
		Br(PBBs&PBDEs)	BL	/	
		DIBP	/	N.D.	
		DEHP	/	N.D.	
		BBP	/	N.D.	
82	Coil	Pb	BL	/	Pass
		Cd	BL	/	
		Hg	BL	/	
		Cr(Cr(VI))	BL	/	
		Br(PBBs&PBDEs)	/	/	
		DIBP	/	/	
		DEHP	/	/	
		BBP	/	/	
83	Lens	Pb	BL	/	Pass
		Cd	BL	/	
		Hg	BL	/	
		Cr(Cr(VI))	BL	/	
		Br(PBBs&PBDEs)	BL	/	
		DIBP	/	N.D.	
		DEHP	/	N.D.	
		BBP	/	N.D.	
DBP	/	N.D.			

84	CMOS photosensitive components 1	Pb	BL	/	Pass
		Cd	BL	/	
		Hg	BL	/	
		Cr(Cr(VI))	BL	/	
		Br(PBBs&PBDEs)	BL	/	
		DIBP	/	N.D.	
		DEHP	/	N.D.	
		BBP	/	N.D.	
85	SMD capacitor	Pb	BL	/	Pass
		Cd	BL	/	
		Hg	BL	/	
		Cr(Cr(VI))	BL	/	
		Br(PBBs&PBDEs)	BL	/	
		DIBP	/	N.D.	
		DEHP	/	N.D.	
		BBP	/	N.D.	
86	Grey plastic	Pb	BL	/	Pass
		Cd	BL	/	
		Hg	BL	/	
		Cr(Cr(VI))	BL	/	
		Br(PBBs&PBDEs)	BL	/	
		DIBP	/	N.D.	
		DEHP	/	N.D.	
		BBP	/	N.D.	
87	Transparent glass	Pb	BL	/	Pass
		Cd	BL	/	
		Hg	BL	/	
		Cr(Cr(VI))	BL	/	
		Br(PBBs&PBDEs)	BL	/	
		DIBP	/	N.D.	
		DEHP	/	N.D.	
		BBP	/	N.D.	
DBP	/	N.D.			

88	Black plastic shell 2	Pb	BL	/	Pass
		Cd	BL	/	
		Hg	BL	/	
		Cr(Cr(VI))	BL	/	
		Br(PBBs&PBDEs)	BL	/	
		DIBP	/	N.D.	
		DEHP	/	N.D.	
		BBP	/	N.D.	
89	CMOS photosensitive components 2	Pb	BL	/	Pass
		Cd	BL	/	
		Hg	BL	/	
		Cr(Cr(VI))	BL	/	
		Br(PBBs&PBDEs)	BL	/	
		DIBP	/	N.D.	
		DEHP	/	N.D.	
		BBP	/	N.D.	
90	Black plastic of black interface	Pb	BL	/	Pass
		Cd	BL	/	
		Hg	BL	/	
		Cr(Cr(VI))	BL	/	
		Br(PBBs&PBDEs)	BL	/	
		DIBP	/	N.D.	
		DEHP	/	N.D.	
		BBP	/	N.D.	
91	Metal contact of black interface	Pb	BL	/	Pass
		Cd	BL	/	
		Hg	BL	/	
		Cr(Cr(VI))	BL	/	
		Br(PBBs&PBDEs)	/	/	
		DIBP	/	/	
		DEHP	/	/	
		BBP	/	/	
DBP	/	/			

7. Camera 3

92	Black plastic shell	Pb	BL	/	Pass
		Cd	BL	/	
		Hg	BL	/	
		Cr(Cr(VI))	BL	/	
		Br(PBBs&PBDEs)	BL	/	
		DIBP	/	N.D.	
		DEHP	/	N.D.	
		BBP	/	N.D.	
93	Lens	Pb	BL	/	Pass
		Cd	BL	/	
		Hg	BL	/	
		Cr(Cr(VI))	BL	/	
		Br(PBBs&PBDEs)	BL	/	
		DIBP	/	N.D.	
		DEHP	/	N.D.	
		BBP	/	N.D.	
94	CMOS sensitive components	Pb	BL	/	Pass
		Cd	BL	/	
		Hg	BL	/	
		Cr(Cr(VI))	BL	/	
		Br(PBBs&PBDEs)	BL	/	
		DIBP	/	N.D.	
		DEHP	/	N.D.	
		BBP	/	N.D.	
95	FPC	Pb	BL	/	Pass
		Cd	BL	/	
		Hg	BL	/	
		Cr(Cr(VI))	BL	/	
		Br(PBBs&PBDEs)	BL	/	
		DIBP	/	N.D.	
		DEHP	/	N.D.	
		BBP	/	N.D.	
DBP	/	N.D.			

8. Vibration motor

96	Silvery metal shell	Pb	BL	/	Pass
		Cd	BL	/	
		Hg	BL	/	
		Cr(Cr(VI))	BL	/	
		Br(PBBs&PBDEs)	/	/	
		DIBP	/	/	
		DEHP	/	/	
		BBP	/	/	
97	Coil	Pb	BL	/	Pass
		Cd	BL	/	
		Hg	BL	/	
		Cr(Cr(VI))	BL	/	
		Br(PBBs&PBDEs)	/	/	
		DIBP	/	/	
		DEHP	/	/	
		BBP	/	/	
98	Black plastic	Pb	BL	/	Pass
		Cd	BL	/	
		Hg	BL	/	
		Cr(Cr(VI))	BL	/	
		Br(PBBs&PBDEs)	BL	/	
		DIBP	/	N.D.	
		DEHP	/	N.D.	
		BBP	/	N.D.	
99	Silvery metal rod	Pb	BL	/	Pass
		Cd	BL	/	
		Hg	BL	/	
		Cr(Cr(VI))	IN	N.D.	
		Br(PBBs&PBDEs)	/	/	
		DIBP	/	/	
		DEHP	/	/	
		BBP	/	/	
DBP	/	/			

100	Silvery metal block	Pb	BL	/	Pass
		Cd	BL	/	
		Hg	BL	/	
		Cr(Cr(VI))	BL	/	
		Br(PBBs&PBDEs)	/	/	
		DIBP	/	/	
		DEHP	/	/	
		DBP	/	/	
101	White plastic base	Pb	BL	/	Pass
		Cd	BL	/	
		Hg	BL	/	
		Cr(Cr(VI))	BL	/	
		Br(PBBs&PBDEs)	BL	/	
		DIBP	/	N.D.	
		DEHP	/	N.D.	
		DBP	/	N.D.	
102	Metal sheet	Pb	BL	/	Pass
		Cd	BL	/	
		Hg	BL	/	
		Cr(Cr(VI))	BL	/	
		Br(PBBs&PBDEs)	/	/	
		DIBP	/	/	
		DEHP	/	/	
		DBP	/	/	
103	Black rubber sleeve	Pb	BL	/	Pass
		Cd	BL	/	
		Hg	BL	/	
		Cr(Cr(VI))	BL	/	
		Br(PBBs&PBDEs)	BL	/	
		DIBP	/	N.D.	
		DEHP	/	N.D.	
		DBP	/	N.D.	

9. PCBA1

104	Blue PCB	Pb	BL	/	Pass
		Cd	BL	/	
		Hg	BL	/	
		Cr(Cr(VI))	BL	/	
		Br(PBBs&PBDEs)	BL	/	
		DIBP	/	N.D.	
		DEHP	/	N.D.	
		BBP	/	N.D.	
105	Silvery metal shield	Pb	BL	/	Pass
		Cd	BL	/	
		Hg	BL	/	
		Cr(Cr(VI))	BL	/	
		Br(PBBs&PBDEs)	BL	/	
		DIBP	/	N.D.	
		DEHP	/	N.D.	
		BBP	/	N.D.	
106	White label	Pb	BL	/	Pass
		Cd	BL	/	
		Hg	BL	/	
		Cr(Cr(VI))	BL	/	
		Br(PBBs&PBDEs)	/	/	
		DIBP	/	/	
		DEHP	/	/	
		BBP	/	/	
107	Silvery metal contact sheet	Pb	BL	/	Pass
		Cd	BL	/	
		Hg	BL	/	
		Cr(Cr(VI))	IN	N.D.	
		Br(PBBs&PBDEs)	/	/	
		DIBP	/	/	
		DEHP	/	/	
		BBP	/	/	
DBP	/	/			

108	Yellow tape	Pb	BL	/	Pass
		Cd	BL	/	
		Hg	BL	/	
		Cr(Cr(VI))	IN	N.D.	
		Br(PBBs&PBDEs)	BL	/	
		DIBP	/	N.D.	
		DEHP	/	N.D.	
		BBP	/	N.D.	
		DBP	/	N.D.	
109	Silvery metal shell of TF card slot	Pb	BL	/	Pass
		Cd	BL	/	
		Hg	BL	/	
		Cr(Cr(VI))	IN	N.D.	
		Br(PBBs&PBDEs)	/	/	
		DIBP	/	/	
		DEHP	/	/	
		BBP	/	/	
		DBP	/	/	
110	Black plastic of TF card slot	Pb	BL	/	Pass
		Cd	BL	/	
		Hg	BL	/	
		Cr(Cr(VI))	BL	/	
		Br(PBBs&PBDEs)	BL	/	
		DIBP	/	N.D.	
		DEHP	/	N.D.	
		BBP	/	N.D.	
		DBP	/	N.D.	
111	Silvery metal contact sheet of TF card slot	Pb	BL	/	Pass
		Cd	BL	/	
		Hg	BL	/	
		Cr(Cr(VI))	BL	/	
		Br(PBBs&PBDEs)	/	/	
		DIBP	/	/	
		DEHP	/	/	
		BBP	/	/	
		DBP	/	/	

112	Black metal of catto	Pb	IN	40	Pass
		Cd	IN	N.D.	
		Hg	BL	/	
		Cr(Cr(VI))	IN	N.D.	
		Br(PBBs&PBDEs)	/	/	
		DIBP	/	/	
		DEHP	/	/	
		BBP	/	/	
113	Black plastic of catto	Pb	BL	/	Pass
		Cd	BL	/	
		Hg	BL	/	
		Cr(Cr(VI))	BL	/	
		Br(PBBs&PBDEs)	BL	/	
		DIBP	/	N.D.	
		DEHP	/	N.D.	
		BBP	/	N.D.	
DBP	/	N.D.			

10. PCBA2

114	Silvery metallic film of catto	Pb	BL	/	Pass
		Cd	BL	/	
		Hg	BL	/	
		Cr(Cr(VI))	BL	/	
		Br(PBBs&PBDEs)	/	/	
		DIBP	/	/	
		DEHP	/	/	
		BBP	/	/	
115	White plastic of platooninsert	Pb	BL	/	Pass
		Cd	BL	/	
		Hg	BL	/	
		Cr(Cr(VI))	BL	/	
		Br(PBBs&PBDEs)	BL	/	
		DIBP	/	N.D.	
		DEHP	/	N.D.	
		BBP	/	N.D.	
DBP	/	N.D.			

116	Black plastic of platooninsert	Pb	BL	/	Pass
		Cd	BL	/	
		Hg	BL	/	
		Cr(Cr(VI))	BL	/	
		Br(PBBs&PBDEs)	BL	/	
		DIBP	/	N.D.	
		DEHP	/	N.D.	
		BBP	/	N.D.	
		DBP	/	N.D.	
117	Metal pin of platooninsert	Pb	BL	/	Pass
		Cd	BL	/	
		Hg	BL	/	
		Cr(Cr(VI))	BL	/	
		Br(PBBs&PBDEs)	/	/	
		DIBP	/	/	
		DEHP	/	/	
		BBP	/	/	
		DBP	/	/	
118	Black interface	Pb	BL	/	Pass
		Cd	BL	/	
		Hg	BL	/	
		Cr(Cr(VI))	BL	/	
		Br(PBBs&PBDEs)	BL	/	
		DIBP	/	N.D.	
		DEHP	/	N.D.	
		BBP	/	N.D.	
		DBP	/	N.D.	
119	Metal sheet	Pb	BL	/	Pass
		Cd	BL	/	
		Hg	BL	/	
		Cr(Cr(VI))	BL	/	
		Br(PBBs&PBDEs)	/	/	
		DIBP	/	/	
		DEHP	/	/	
		BBP	/	/	
		DBP	/	/	

120	Black electronic components	Pb	BL	/	Pass
		Cd	BL	/	
		Hg	BL	/	
		Cr(Cr(VI))	BL	/	
		Br(PBBs&PBDEs)	BL	/	
		DIBP	/	N.D.	
		DEHP	/	N.D.	
		BBP	/	N.D.	
		DBP	/	N.D.	
121	Black rubber sleeve	Pb	BL	/	Pass
		Cd	BL	/	
		Hg	BL	/	
		Cr(Cr(VI))	BL	/	
		Br(PBBs&PBDEs)	BL	/	
		DIBP	/	N.D.	
		DEHP	/	N.D.	
		BBP	/	N.D.	
		DBP	/	N.D.	
122	Chip 1	Pb	BL	/	Pass
		Cd	BL	/	
		Hg	BL	/	
		Cr(Cr(VI))	BL	/	
		Br(PBBs&PBDEs)	BL	/	
		DIBP	/	N.D.	
		DEHP	/	N.D.	
		BBP	/	N.D.	
		DBP	/	N.D.	
123	Chip 2	Pb	BL	/	Pass
		Cd	BL	/	
		Hg	BL	/	
		Cr(Cr(VI))	BL	/	
		Br(PBBs&PBDEs)	BL	/	
		DIBP	/	N.D.	
		DEHP	/	N.D.	
		BBP	/	N.D.	
		DBP	/	N.D.	

124	Chip 3	Pb	BL	/	Pass
		Cd	BL	/	
		Hg	BL	/	
		Cr(Cr(VI))	BL	/	
		Br(PBBs&PBDEs)	BL	/	
		DIBP	/	N.D.	
		DEHP	/	N.D.	
		BBP	/	N.D.	
		DBP	/	N.D.	
125	Chip 4	Pb	BL	/	Pass
		Cd	BL	/	
		Hg	BL	/	
		Cr(Cr(VI))	BL	/	
		Br(PBBs&PBDEs)	BL	/	
		DIBP	/	N.D.	
		DEHP	/	N.D.	
		BBP	/	N.D.	
		DBP	/	N.D.	
126	Chip 5	Pb	BL	/	Pass
		Cd	BL	/	
		Hg	BL	/	
		Cr(Cr(VI))	BL	/	
		Br(PBBs&PBDEs)	BL	/	
		DIBP	/	N.D.	
		DEHP	/	N.D.	
		BBP	/	N.D.	
		DBP	/	N.D.	
127	Chip 6	Pb	BL	/	Pass
		Cd	BL	/	
		Hg	BL	/	
		Cr(Cr(VI))	BL	/	
		Br(PBBs&PBDEs)	BL	/	
		DIBP	/	N.D.	
		DEHP	/	N.D.	
		BBP	/	N.D.	
		DBP	/	N.D.	

128	Chip 7	Pb	BL	/	Pass
		Cd	BL	/	
		Hg	BL	/	
		Cr(Cr(VI))	BL	/	
		Br(PBBs&PBDEs)	BL	/	
		DIBP	/	N.D.	
		DEHP	/	N.D.	
		BBP	/	N.D.	
		DBP	/	N.D.	
129	Chip 8	Pb	BL	/	Pass
		Cd	BL	/	
		Hg	BL	/	
		Cr(Cr(VI))	BL	/	
		Br(PBBs&PBDEs)	BL	/	
		DIBP	/	N.D.	
		DEHP	/	N.D.	
		BBP	/	N.D.	
		DBP	/	N.D.	
130	Chip 9	Pb	BL	/	Pass
		Cd	BL	/	
		Hg	BL	/	
		Cr(Cr(VI))	BL	/	
		Br(PBBs&PBDEs)	BL	/	
		DIBP	/	N.D.	
		DEHP	/	N.D.	
		BBP	/	N.D.	
		DBP	/	N.D.	
131	Chip 10	Pb	BL	/	Pass
		Cd	BL	/	
		Hg	BL	/	
		Cr(Cr(VI))	BL	/	
		Br(PBBs&PBDEs)	BL	/	
		DIBP	/	N.D.	
		DEHP	/	N.D.	
		BBP	/	N.D.	
		DBP	/	N.D.	

132	Chip 11	Pb	BL	/	Pass
		Cd	BL	/	
		Hg	BL	/	
		Cr(Cr(VI))	BL	/	
		Br(PBBs&PBDEs)	BL	/	
		DIBP	/	N.D.	
		DEHP	/	N.D.	
		BBP	/	N.D.	
		DBP	/	N.D.	
133	Chip 12	Pb	BL	/	Pass
		Cd	BL	/	
		Hg	BL	/	
		Cr(Cr(VI))	BL	/	
		Br(PBBs&PBDEs)	BL	/	
		DIBP	/	N.D.	
		DEHP	/	N.D.	
		BBP	/	N.D.	
		DBP	/	N.D.	
134	Magnet core	Pb	BL	/	Pass
		Cd	BL	/	
		Hg	BL	/	
		Cr(Cr(VI))	BL	/	
		Br(PBBs&PBDEs)	/	/	
		DIBP	/	/	
		DEHP	/	/	
		BBP	/	/	
		DBP	/	/	
135	Coil	Pb	BL	/	Pass
		Cd	BL	/	
		Hg	BL	/	
		Cr(Cr(VI))	BL	/	
		Br(PBBs&PBDEs)	/	/	
		DIBP	/	/	
		DEHP	/	/	
		BBP	/	/	
		DBP	/	/	

136	crystal oscillator	Pb	BL	/	Pass
		Cd	BL	/	
		Hg	BL	/	
		Cr(Cr(VI))	BL	/	
		Br(PBBs&PBDEs)	BL	/	
		DIBP	/	N.D.	
		DEHP	/	N.D.	
		BBP	/	N.D.	
		DBP	/	N.D.	
137	Patch antenna interface 1	Pb	BL	/	Pass
		Cd	BL	/	
		Hg	BL	/	
		Cr(Cr(VI))	BL	/	
		Br(PBBs&PBDEs)	BL	/	
		DIBP	/	N.D.	
		DEHP	/	N.D.	
		BBP	/	N.D.	
		DBP	/	N.D.	
138	Patch antenna interface 2	Pb	BL	/	Pass
		Cd	BL	/	
		Hg	BL	/	
		Cr(Cr(VI))	BL	/	
		Br(PBBs&PBDEs)	BL	/	
		DIBP	/	N.D.	
		DEHP	/	N.D.	
		BBP	/	N.D.	
		DBP	/	N.D.	
139	SMD resistor	Pb	BL	/	Pass
		Cd	BL	/	
		Hg	BL	/	
		Cr(Cr(VI))	IN	N.D.	
		Br(PBBs&PBDEs)	BL	/	
		DIBP	/	N.D.	
		DEHP	/	N.D.	
		BBP	/	N.D.	
		DBP	/	N.D.	

140	SMD capacitor	Pb	BL	/	Pass
		Cd	BL	/	
		Hg	BL	/	
		Cr(Cr(VI))	BL	/	
		Br(PBBs&PBDEs)	BL	/	
		DIBP	/	N.D.	
		DEHP	/	N.D.	
		BBP	/	N.D.	
		DBP	/	N.D.	
141	Plug fuse	Pb	BL	/	Pass
		Cd	BL	/	
		Hg	BL	/	
		Cr(Cr(VI))	BL	/	
		Br(PBBs&PBDEs)	BL	/	
		DIBP	/	N.D.	
		DEHP	/	N.D.	
		BBP	/	N.D.	
		DBP	/	N.D.	
142	SMT LED lights	Pb	BL	/	Pass
		Cd	BL	/	
		Hg	BL	/	
		Cr(Cr(VI))	BL	/	
		Br(PBBs&PBDEs)	BL	/	
		DIBP	/	N.D.	
		DEHP	/	N.D.	
		BBP	/	N.D.	
		DBP	/	N.D.	
143	White components for the patch	Pb	BL	/	Pass
		Cd	BL	/	
		Hg	BL	/	
		Cr(Cr(VI))	BL	/	
		Br(PBBs&PBDEs)	BL	/	
		DIBP	/	N.D.	
		DEHP	/	N.D.	
		BBP	/	N.D.	
		DBP	/	N.D.	

144	Blue PCB	Pb	BL	/	Pass
		Cd	BL	/	
		Hg	BL	/	
		Cr(Cr(VI))	BL	/	
		Br(PBBs&PBDEs)	IN	N.D.	
		DIBP	/	N.D.	
		DEHP	/	N.D.	
		BBP	/	N.D.	
DBP	/	N.D.			
145	Silvery metal shell of TYPE-C's interface	Pb	BL	/	Pass
		Cd	BL	/	
		Hg	BL	/	
		Cr(Cr(VI))	IN	N.D.	
		Br(PBBs&PBDEs)	/	/	
		DIBP	/	/	
		DEHP	/	/	
		BBP	/	/	
DBP	/	/			
146	Black plastic of TYPE-C's interface	Pb	BL	/	Pass
		Cd	BL	/	
		Hg	BL	/	
		Cr(Cr(VI))	BL	/	
		Br(PBBs&PBDEs)	BL	/	
		DIBP	/	N.D.	
		DEHP	/	N.D.	
		BBP	/	N.D.	
DBP	/	N.D.			
147	Metal contact sheet of TYPE-C's interface	Pb	BL	/	Pass
		Cd	BL	/	
		Hg	BL	/	
		Cr(Cr(VI))	BL	/	
		Br(PBBs&PBDEs)	/	/	
		DIBP	/	/	
		DEHP	/	/	
		BBP	/	/	
DBP	/	/			

148	Metal core of wire of antenna	Pb	BL	/	Pass
		Cd	BL	/	
		Hg	BL	/	
		Cr(Cr(VI))	BL	/	
		Br(PBBs&PBDEs)	/	/	
		DIBP	/	/	
		DEHP	/	/	
		BBP	/	/	
		DBP	/	/	
149	Silver metal mesh of antenna	Pb	BL	/	Pass
		Cd	BL	/	
		Hg	BL	/	
		Cr(Cr(VI))	BL	/	
		Br(PBBs&PBDEs)	/	/	
		DIBP	/	/	
		DEHP	/	/	
		BBP	/	/	
		DBP	/	/	
150	Black wire jacket of antenna	Pb	BL	/	Pass
		Cd	BL	/	
		Hg	BL	/	
		Cr(Cr(VI))	BL	/	
		Br(PBBs&PBDEs)	BL	/	
		DIBP	/	N.D.	
		DEHP	/	N.D.	
		BBP	/	N.D.	
		DBP	/	N.D.	
151	Transparent wire jacket of antenna	Pb	BL	/	Pass
		Cd	BL	/	
		Hg	BL	/	
		Cr(Cr(VI))	BL	/	
		Br(PBBs&PBDEs)	BL	/	
		DIBP	/	N.D.	
		DEHP	/	N.D.	
		BBP	/	N.D.	
		DBP	/	N.D.	

152	Metal shell of antenna	Pb	BL	/	Pass
		Cd	BL	/	
		Hg	BL	/	
		Cr(Cr(VI))	BL	/	
		Br(PBBs&PBDEs)	/	/	
		DIBP	/	/	
		DEHP	/	/	
		DBP	/	/	
153	Black plastic shell of antenna	Pb	BL	/	Pass
		Cd	BL	/	
		Hg	BL	/	
		Cr(Cr(VI))	BL	/	
		Br(PBBs&PBDEs)	BL	/	
		DIBP	/	N.D.	
		DEHP	/	N.D.	
		DBP	/	N.D.	
154	IC 1	Pb	BL	/	Pass
		Cd	BL	/	
		Hg	BL	/	
		Cr(Cr(VI))	BL	/	
		Br(PBBs&PBDEs)	BL	/	
		DIBP	/	N.D.	
		DEHP	/	N.D.	
		DBP	/	N.D.	
155	IC 2	Pb	BL	/	Pass
		Cd	BL	/	
		Hg	BL	/	
		Cr(Cr(VI))	BL	/	
		Br(PBBs&PBDEs)	BL	/	
		DIBP	/	N.D.	
		DEHP	/	N.D.	
		DBP	/	N.D.	

156	IC 3	Pb	BL	/	Pass
		Cd	BL	/	
		Hg	BL	/	
		Cr(Cr(VI))	BL	/	
		Br(PBBs&PBDEs)	BL	/	
		DIBP	/	N.D.	
		DEHP	/	N.D.	
		BBP	/	N.D.	
		DBP	/	N.D.	
157	SMD MIC	Pb	BL	/	Pass
		Cd	BL	/	
		Hg	BL	/	
		Cr(Cr(VI))	BL	/	
		Br(PBBs&PBDEs)	BL	/	
		DIBP	/	N.D.	
		DEHP	/	N.D.	
		BBP	/	N.D.	
		DBP	/	N.D.	
158	Black interface	Pb	BL	/	Pass
		Cd	BL	/	
		Hg	BL	/	
		Cr(Cr(VI))	BL	/	
		Br(PBBs&PBDEs)	BL	/	
		DIBP	/	N.D.	
		DEHP	/	N.D.	
		BBP	/	N.D.	
		DBP	/	N.D.	
159	Metal sheet	Pb	BL	/	Pass
		Cd	BL	/	
		Hg	BL	/	
		Cr(Cr(VI))	BL	/	
		Br(PBBs&PBDEs)	/	/	
		DIBP	/	/	
		DEHP	/	/	
		BBP	/	/	
		DBP	/	/	

160	SMD resistor	Pb	BL	/	Pass
		Cd	BL	/	
		Hg	BL	/	
		Cr(Cr(VI))	BL	/	
		Br(PBBs&PBDEs)	BL	/	
		DIBP	/	N.D.	
		DEHP	/	N.D.	
		BBP	/	N.D.	
161	SMD capacitor	Pb	BL	/	Pass
		Cd	BL	/	
		Hg	BL	/	
		Cr(Cr(VI))	BL	/	
		Br(PBBs&PBDEs)	BL	/	
		DIBP	/	N.D.	
		DEHP	/	N.D.	
		BBP	/	N.D.	
162	SMD inductor	Pb	BL	/	Pass
		Cd	BL	/	
		Hg	BL	/	
		Cr(Cr(VI))	BL	/	
		Br(PBBs&PBDEs)	/	/	
		DIBP	/	/	
		DEHP	/	/	
		BBP	/	/	
DBP	/	/			

11. Battery

163	Yellow tape	Pb	BL	/	Pass
		Cd	BL	/	
		Hg	BL	/	
		Cr(Cr(VI))	BL	/	
		Br(PBBs&PBDEs)	BL	/	
		DIBP	/	N.D.	
		DEHP	/	N.D.	
		BBP	/	N.D.	
DBP	/	N.D.			

164	Silvery Plastic jacket	Pb	BL	/	Pass
		Cd	BL	/	
		Hg	BL	/	
		Cr(Cr(VI))	BL	/	
		Br(PBBs&PBDEs)	BL	/	
		DIBP	/	N.D.	
		DEHP	/	N.D.	
		BBP	/	N.D.	
165	Black foam	Pb	BL	/	Pass
		Cd	BL	/	
		Hg	BL	/	
		Cr(Cr(VI))	BL	/	
		Br(PBBs&PBDEs)	IN	N.D.	
		DIBP	/	N.D.	
		DEHP	/	N.D.	
		BBP	/	N.D.	
166	Double faced adhesive tape	Pb	BL	/	Pass
		Cd	BL	/	
		Hg	BL	/	
		Cr(Cr(VI))	BL	/	
		Br(PBBs&PBDEs)	IN	N.D.	
		DIBP	/	N.D.	
		DEHP	/	N.D.	
		BBP	/	N.D.	
167	Battery PCB	Pb	BL	/	Pass
		Cd	BL	/	
		Hg	BL	/	
		Cr(Cr(VI))	BL	/	
		Br(PBBs&PBDEs)	BL	/	
		DIBP	/	N.D.	
		DEHP	/	N.D.	
		BBP	/	N.D.	
DBP	/	N.D.			

168	Tin solder	Pb	BL	/	Pass
		Cd	BL	/	
		Hg	BL	/	
		Cr(Cr(VI))	BL	/	
		Br(PBBs&PBDEs)	/	/	
		DIBP	/	/	
		DEHP	/	/	
		DBP	/	/	
169	Chip 1	Pb	BL	/	Pass
		Cd	BL	/	
		Hg	BL	/	
		Cr(Cr(VI))	BL	/	
		Br(PBBs&PBDEs)	BL	/	
		DIBP	/	N.D.	
		DEHP	/	N.D.	
		DBP	/	N.D.	
170	Chip 2	Pb	BL	/	Pass
		Cd	BL	/	
		Hg	BL	/	
		Cr(Cr(VI))	BL	/	
		Br(PBBs&PBDEs)	BL	/	
		DIBP	/	N.D.	
		DEHP	/	N.D.	
		DBP	/	N.D.	
171	SMD resistor	Pb	BL	/	Pass
		Cd	BL	/	
		Hg	BL	/	
		Cr(Cr(VI))	BL	/	
		Br(PBBs&PBDEs)	BL	/	
		DIBP	/	N.D.	
		DEHP	/	N.D.	
		DBP	/	N.D.	

172	SMD capacitor	Pb	BL	/	Pass
		Cd	BL	/	
		Hg	BL	/	
		Cr(Cr(VI))	BL	/	
		Br(PBBs&PBDEs)	BL	/	
		DIBP	/	N.D.	
		DEHP	/	N.D.	
		BBP	/	N.D.	
		DBP	/	N.D.	
173	Plug fuse	Pb	BL	/	Pass
		Cd	BL	/	
		Hg	BL	/	
		Cr(Cr(VI))	BL	/	
		Br(PBBs&PBDEs)	BL	/	
		DIBP	/	N.D.	
		DEHP	/	N.D.	
		BBP	/	N.D.	
		DBP	/	N.D.	
174	Silvery metallic film	Pb	BL	/	Pass
		Cd	BL	/	
		Hg	BL	/	
		Cr(Cr(VI))	BL	/	
		Br(PBBs&PBDEs)	/	/	
		DIBP	/	/	
		DEHP	/	/	
		BBP	/	/	
		DBP	/	/	
175	FPC	Pb	BL	/	Pass
		Cd	BL	/	
		Hg	BL	/	
		Cr(Cr(VI))	BL	/	
		Br(PBBs&PBDEs)	BL	/	
		DIBP	/	N.D.	
		DEHP	/	N.D.	
		BBP	/	N.D.	
		DBP	/	N.D.	

176	Black foam	Pb	BL	/	Pass
		Cd	BL	/	
		Hg	BL	/	
		Cr(Cr(VI))	BL	/	
		Br(PBBs&PBDEs)	BL	/	
		DIBP	/	N.D.	
		DEHP	/	N.D.	
		BBP	/	N.D.	
177	Black plastic of black interface	Pb	BL	/	Pass
		Cd	BL	/	
		Hg	BL	/	
		Cr(Cr(VI))	BL	/	
		Br(PBBs&PBDEs)	BL	/	
		DIBP	/	N.D.	
		DEHP	/	N.D.	
		BBP	/	N.D.	
178	Metal contact of black interface	Pb	BL	/	Pass
		Cd	BL	/	
		Hg	BL	/	
		Cr(Cr(VI))	BL	/	
		Br(PBBs&PBDEs)	/	/	
		DIBP	/	/	
		DEHP	/	/	
		BBP	/	/	
		DBP	/	/	

12. Shell of headphone

179	White plastic shell	Pb	BL	/	Pass
		Cd	BL	/	
		Hg	BL	/	
		Cr(Cr(VI))	BL	/	
		Br(PBBs&PBDEs)	BL	/	
		DIBP	/	N.D.	
		DEHP	/	N.D.	
		BBP	/	N.D.	
		DBP	/	N.D.	

180	Black fabric net	Pb	BL	/	Pass
		Cd	BL	/	
		Hg	BL	/	
		Cr(Cr(VI))	BL	/	
		Br(PBBs&PBDEs)	BL	/	
		DIBP	/	N.D.	
		DEHP	/	N.D.	
		BBP	/	N.D.	
181	White plastic	Pb	BL	/	Pass
		Cd	BL	/	
		Hg	BL	/	
		Cr(Cr(VI))	BL	/	
		Br(PBBs&PBDEs)	BL	/	
		DIBP	/	N.D.	
		DEHP	/	N.D.	
		BBP	/	N.D.	
DBP	/	N.D.			

13. Headset - speaker

182	Silvery metal shell	Pb	BL	/	Pass
		Cd	BL	/	
		Hg	BL	/	
		Cr(Cr(VI))	BL	/	
		Br(PBBs&PBDEs)	/	/	
		DIBP	/	/	
		DEHP	/	/	
		BBP	/	/	
183	Magnet	Pb	BL	/	Pass
		Cd	BL	/	
		Hg	BL	/	
		Cr(Cr(VI))	BL	/	
		Br(PBBs&PBDEs)	/	/	
		DIBP	/	/	
		DEHP	/	/	
		BBP	/	/	
DBP	/	/			

184	Silvery perforated sheet metal	Pb	BL	/	Pass
		Cd	BL	/	
		Hg	BL	/	
		Cr(Cr(VI))	BL	/	
		Br(PBBs&PBDEs)	/	/	
		DIBP	/	/	
		DEHP	/	/	
		BBP	/	/	
		DBP	/	/	
185	Black foam	Pb	BL	/	Pass
		Cd	BL	/	
		Hg	BL	/	
		Cr(Cr(VI))	BL	/	
		Br(PBBs&PBDEs)	BL	/	
		DIBP	/	N.D.	
		DEHP	/	N.D.	
		BBP	/	N.D.	
		DBP	/	N.D.	
186	Black fabric net	Pb	BL	/	Pass
		Cd	BL	/	
		Hg	BL	/	
		Cr(Cr(VI))	BL	/	
		Br(PBBs&PBDEs)	BL	/	
		DIBP	/	N.D.	
		DEHP	/	N.D.	
		BBP	/	N.D.	
		DBP	/	N.D.	
187	Voice coil	Pb	BL	/	Pass
		Cd	BL	/	
		Hg	BL	/	
		Cr(Cr(VI))	BL	/	
		Br(PBBs&PBDEs)	BL	/	
		DIBP	/	N.D.	
		DEHP	/	N.D.	
		BBP	/	N.D.	
		DBP	/	N.D.	

188	Transparent plastic	Pb	BL	/	Pass
		Cd	BL	/	
		Hg	BL	/	
		Cr(Cr(VI))	BL	/	
		Br(PBBs&PBDEs)	BL	/	
		DIBP	/	N.D.	
		DEHP	/	N.D.	
		BBP	/	N.D.	
189	White colloid	Pb	BL	/	Pass
		Cd	BL	/	
		Hg	BL	/	
		Cr(Cr(VI))	BL	/	
		Br(PBBs&PBDEs)	BL	/	
		DIBP	/	N.D.	
		DEHP	/	N.D.	
		BBP	/	N.D.	
DBP	/	N.D.			

14. Cable of headphone

190	Silvery metal shell of type-c interface	Pb	BL	/	Pass
		Cd	BL	/	
		Hg	BL	/	
		Cr(Cr(VI))	IN	N.D.	
		Br(PBBs&PBDEs)	/	/	
		DIBP	/	/	
		DEHP	/	/	
		BBP	/	/	
191	Black plastic of type-c interface	Pb	BL	/	Pass
		Cd	BL	/	
		Hg	BL	/	
		Cr(Cr(VI))	BL	/	
		Br(PBBs&PBDEs)	BL	/	
		DIBP	/	N.D.	
		DEHP	/	N.D.	
		BBP	/	N.D.	
DBP	/	N.D.			

192	Metal contact sheet of type-c interface	Pb	BL	/	Pass
		Cd	BL	/	
		Hg	BL	/	
		Cr(Cr(VI))	BL	/	
		Br(PBBs&PBDEs)	/	/	
		DIBP	/	/	
		DEHP	/	/	
		BBP	/	/	
		DBP	/	/	
193	White plastic of type-c interface	Pb	BL	/	Pass
		Cd	BL	/	
		Hg	BL	/	
		Cr(Cr(VI))	BL	/	
		Br(PBBs&PBDEs)	BL	/	
		DIBP	/	N.D.	
		DEHP	/	N.D.	
		BBP	/	N.D.	
		DBP	/	N.D.	
194	PCB of type-c interface	Pb	BL	/	Pass
		Cd	BL	/	
		Hg	BL	/	
		Cr(Cr(VI))	BL	/	
		Br(PBBs&PBDEs)	IN	N.D.	
		DIBP	/	N.D.	
		DEHP	/	N.D.	
		BBP	/	N.D.	
		DBP	/	N.D.	
195	Solder of type-c interface	Pb	IN	338	Pass
		Cd	IN	N.D.	
		Hg	BL	/	
		Cr(Cr(VI))	BL	/	
		Br(PBBs&PBDEs)	/	/	
		DIBP	/	/	
		DEHP	/	/	
		BBP	/	/	
		DBP	/	/	

196	White encapsulation of type-c interface	Pb	BL	/	Pass
		Cd	BL	/	
		Hg	BL	/	
		Cr(Cr(VI))	BL	/	
		Br(PBBs&PBDEs)	BL	/	
		DIBP	/	N.D.	
		DEHP	/	N.D.	
		BBP	/	N.D.	
197	White plastic block of type-c interface	Pb	BL	/	Pass
		Cd	BL	/	
		Hg	BL	/	
		Cr(Cr(VI))	BL	/	
		Br(PBBs&PBDEs)	BL	/	
		DIBP	/	N.D.	
		DEHP	/	N.D.	
		BBP	/	N.D.	
198	White exterior wire jacket	Pb	BL	/	Pass
		Cd	BL	/	
		Hg	BL	/	
		Cr(Cr(VI))	BL	/	
		Br(PBBs&PBDEs)	BL	/	
		DIBP	/	N.D.	
		DEHP	/	N.D.	
		BBP	/	N.D.	
199	Red Core of wire	Pb	BL	/	Pass
		Cd	BL	/	
		Hg	BL	/	
		Cr(Cr(VI))	BL	/	
		Br(PBBs&PBDEs)	/	/	
		DIBP	/	/	
		DEHP	/	/	
		BBP	/	/	
DBP	/	/			

200	Cupreous Core of wire	Pb	BL	/	Pass
		Cd	BL	/	
		Hg	BL	/	
		Cr(Cr(VI))	BL	/	
		Br(PBBs&PBDEs)	/	/	
		DIBP	/	/	
		DEHP	/	/	
		BBP	/	/	
201	Blue Core of wire	Pb	BL	/	Pass
		Cd	BL	/	
		Hg	BL	/	
		Cr(Cr(VI))	BL	/	
		Br(PBBs&PBDEs)	/	/	
		DIBP	/	/	
		DEHP	/	/	
		BBP	/	/	
202	Green Core of wire	Pb	BL	/	Pass
		Cd	BL	/	
		Hg	BL	/	
		Cr(Cr(VI))	BL	/	
		Br(PBBs&PBDEs)	/	/	
		DIBP	/	/	
		DEHP	/	/	
		BBP	/	/	

15. PCBA of headset

203	Blue PCB	Pb	BL	/	Pass
		Cd	BL	/	
		Hg	BL	/	
		Cr(Cr(VI))	BL	/	
		Br(PBBs&PBDEs)	IN	N.D.	
		DIBP	/	N.D.	
		DEHP	/	N.D.	
		BBP	/	N.D.	
DBP	/	N.D.			

204	Transparent tape	Pb	BL	/	Pass
		Cd	BL	/	
		Hg	BL	/	
		Cr(Cr(VI))	BL	/	
		Br(PBBs&PBDEs)	BL	/	
		DIBP	/	N.D.	
		DEHP	/	N.D.	
		BBP	/	N.D.	
205	Silvery metal shrapnel	Pb	BL	/	Pass
		Cd	BL	/	
		Hg	BL	/	
		Cr(Cr(VI))	IN	N.D.	
		Br(PBBs&PBDEs)	/	/	
		DIBP	/	/	
		DEHP	/	/	
		BBP	/	/	
206	Chip microphone	Pb	BL	/	Pass
		Cd	BL	/	
		Hg	BL	/	
		Cr(Cr(VI))	BL	/	
		Br(PBBs&PBDEs)	/	/	
		DIBP	/	N.D.	
		DEHP	/	N.D.	
		BBP	/	N.D.	
207	Tin solder	Pb	IN	31	Pass
		Cd	BL	/	
		Hg	BL	/	
		Cr(Cr(VI))	BL	/	
		Br(PBBs&PBDEs)	/	/	
		DIBP	/	/	
		DEHP	/	/	
		BBP	/	/	
DBP	/	/			

16. Cable

208	Silvery metal shell of USB slot	Pb	BL	/	Pass
		Cd	BL	/	
		Hg	BL	/	
		Cr(Cr(VI))	BL	/	
		Br(PBBs&PBDEs)	/	/	
		DIBP	/	/	
		DEHP	/	/	
		BBP	/	/	
209	Metal contact sheet of USB slot	Pb	BL	/	Pass
		Cd	BL	/	
		Hg	BL	/	
		Cr(Cr(VI))	BL	/	
		Br(PBBs&PBDEs)	/	/	
		DIBP	/	/	
		DEHP	/	/	
		BBP	/	/	
210	White plastic of USB slot	Pb	BL	/	Pass
		Cd	BL	/	
		Hg	BL	/	
		Cr(Cr(VI))	BL	/	
		Br(PBBs&PBDEs)	BL	/	
		DIBP	/	N.D.	
		DEHP	/	N.D.	
		BBP	/	N.D.	
211	Translucent plastic of USB slot	Pb	BL	/	Pass
		Cd	BL	/	
		Hg	BL	/	
		Cr(Cr(VI))	BL	/	
		Br(PBBs&PBDEs)	BL	/	
		DIBP	/	N.D.	
		DEHP	/	N.D.	
		BBP	/	N.D.	
DBP	/	N.D.			

212	White encapsulation of USB slot	Pb	BL	/	Pass
		Cd	BL	/	
		Hg	BL	/	
		Cr(Cr(VI))	BL	/	
		Br(PBBs&PBDEs)	BL	/	
		DIBP	/	N.D.	
		DEHP	/	N.D.	
		BBP	/	N.D.	
DBP	/	N.D.			
213	Silvery metal shell of type-c interface	Pb	BL	/	Pass
		Cd	BL	/	
		Hg	BL	/	
		Cr(Cr(VI))	IN	N.D.	
		Br(PBBs&PBDEs)	/	/	
		DIBP	/	/	
		DEHP	/	/	
		BBP	/	/	
DBP	/	/			
214	Metal contact sheet of type-c interface	Pb	BL	/	Pass
		Cd	BL	/	
		Hg	BL	/	
		Cr(Cr(VI))	BL	/	
		Br(PBBs&PBDEs)	/	/	
		DIBP	/	/	
		DEHP	/	/	
		BBP	/	/	
DBP	/	/			
215	White plastic of type-c interface	Pb	BL	/	Pass
		Cd	BL	/	
		Hg	BL	/	
		Cr(Cr(VI))	BL	/	
		Br(PBBs&PBDEs)	BL	/	
		DIBP	/	N.D.	
		DEHP	/	N.D.	
		BBP	/	N.D.	
DBP	/	N.D.			

216	PCB of type-c interface	Pb	BL	/	Pass
		Cd	BL	/	
		Hg	BL	/	
		Cr(Cr(VI))	BL	/	
		Br(PBBs&PBDEs)	IN	N.D.	
		DIBP	/	N.D.	
		DEHP	/	N.D.	
		BBP	/	N.D.	
		DBP	/	N.D.	
217	SMD resistor of type-c interface	Pb	BL	/	Pass
		Cd	BL	/	
		Hg	BL	/	
		Cr(Cr(VI))	BL	/	
		Br(PBBs&PBDEs)	BL	/	
		DIBP	/	N.D.	
		DEHP	/	N.D.	
		BBP	/	N.D.	
		DBP	/	N.D.	
218	SMD capacitor of type-c interface	Pb	BL	/	Pass
		Cd	BL	/	
		Hg	BL	/	
		Cr(Cr(VI))	BL	/	
		Br(PBBs&PBDEs)	BL	/	
		DIBP	/	N.D.	
		DEHP	/	N.D.	
		BBP	/	N.D.	
		DBP	/	N.D.	
219	Solder of type-c interface	Pb	BL	/	Pass
		Cd	BL	/	
		Hg	BL	/	
		Cr(Cr(VI))	BL	/	
		Br(PBBs&PBDEs)	/	/	
		DIBP	/	/	
		DEHP	/	/	
		BBP	/	/	
		DBP	/	/	

220	Translucent plastic type-c interface	Pb	BL	/	Pass
		Cd	BL	/	
		Hg	BL	/	
		Cr(Cr(VI))	BL	/	
		Br(PBBs&PBDEs)	BL	/	
		DIBP	/	N.D.	
		DEHP	/	N.D.	
		BBP	/	N.D.	
221	White encapsulation type-c interface	Pb	BL	/	Pass
		Cd	BL	/	
		Hg	BL	/	
		Cr(Cr(VI))	BL	/	
		Br(PBBs&PBDEs)	BL	/	
		DIBP	/	N.D.	
		DEHP	/	N.D.	
		BBP	/	N.D.	
222	White exterior wire jacket	Pb	BL	/	Pass
		Cd	BL	/	
		Hg	BL	/	
		Cr(Cr(VI))	BL	/	
		Br(PBBs&PBDEs)	BL	/	
		DIBP	/	N.D.	
		DEHP	/	N.D.	
		BBP	/	N.D.	
223	Red wire jacket	Pb	BL	/	Pass
		Cd	BL	/	
		Hg	BL	/	
		Cr(Cr(VI))	BL	/	
		Br(PBBs&PBDEs)	BL	/	
		DIBP	/	N.D.	
		DEHP	/	N.D.	
		BBP	/	N.D.	
		DBP	/	N.D.	

224	Green wire jacket	Pb	BL	/	Pass
		Cd	BL	/	
		Hg	BL	/	
		Cr(Cr(VI))	BL	/	
		Br(PBBs&PBDEs)	BL	/	
		DIBP	/	N.D.	
		DEHP	/	N.D.	
		BBP	/	N.D.	
225	White wire jacket	Pb	BL	/	Pass
		Cd	BL	/	
		Hg	BL	/	
		Cr(Cr(VI))	BL	/	
		Br(PBBs&PBDEs)	BL	/	
		DIBP	/	N.D.	
		DEHP	/	N.D.	
		BBP	/	N.D.	
226	Black wire jacket	Pb	BL	/	Pass
		Cd	BL	/	
		Hg	BL	/	
		Cr(Cr(VI))	BL	/	
		Br(PBBs&PBDEs)	BL	/	
		DIBP	/	N.D.	
		DEHP	/	N.D.	
		BBP	/	N.D.	
227	Core of wire	Pb	BL	/	Pass
		Cd	BL	/	
		Hg	BL	/	
		Cr(Cr(VI))	BL	/	
		Br(PBBs&PBDEs)	/	/	
		DIBP	/	/	
		DEHP	/	/	
		BBP	/	/	
DBP	/	/			

17. Housing of adapter

228	White plastic shell	Pb	BL	/	Pass
		Cd	BL	/	
		Hg	BL	/	
		Cr(Cr(VI))	BL	/	
		Br(PBBs&PBDEs)	BL	/	
		DIBP	/	N.D.	
		DEHP	/	N.D.	
		BBP	/	N.D.	
229	Metal pin	Pb	BL	/	Pass
		Cd	BL	/	
		Hg	BL	/	
		Cr(Cr(VI))	BL	/	
		Br(PBBs&PBDEs)	/	/	
		DIBP	/	/	
		DEHP	/	/	
		BBP	/	/	
230	Transparent plastic	Pb	BL	/	Pass
		Cd	BL	/	
		Hg	BL	/	
		Cr(Cr(VI))	BL	/	
		Br(PBBs&PBDEs)	BL	/	
		DIBP	/	N.D.	
		DEHP	/	N.D.	
		BBP	/	N.D.	
		DBP	/	N.D.	

18. PCBA of adapter

231	PCB	Pb	BL	/	Pass
		Cd	BL	/	
		Hg	BL	/	
		Cr(Cr(VI))	BL	/	
		Br(PBBs&PBDEs)	IN	N.D.	
		DIBP	/	N.D.	
		DEHP	/	N.D.	
		BBP	/	N.D.	
		DBP	/	N.D.	

232	White glue	Pb	BL	/	Pass
		Cd	BL	/	
		Hg	BL	/	
		Cr(Cr(VI))	BL	/	
		Br(PBBs&PBDEs)	BL	/	
		DIBP	/	N.D.	
		DEHP	/	N.D.	
		BBP	/	N.D.	
		DBP	/	N.D.	
233	Black plastic sheet	Pb	BL	/	Pass
		Cd	BL	/	
		Hg	BL	/	
		Cr(Cr(VI))	BL	/	
		Br(PBBs&PBDEs)	IN	PBDEs :250 PBBs: N.D.	
		DIBP	/	N.D.	
		DEHP	/	N.D.	
		BBP	/	N.D.	
		DBP	/	N.D.	
234	Metal parts of L2 fuse	Pb	BL	/	Pass
		Cd	BL	/	
		Hg	BL	/	
		Cr(Cr(VI))	BL	/	
		Br(PBBs&PBDEs)	/	/	
		DIBP	/	/	
		DEHP	/	/	
		BBP	/	/	
		DBP	/	/	
235	Ceramic of L2 fuse	Pb	BL	/	Pass
		Cd	BL	/	
		Hg	BL	/	
		Cr(Cr(VI))	BL	/	
		Br(PBBs&PBDEs)	BL	/	
		DIBP	/	N.D.	
		DEHP	/	N.D.	
		BBP	/	N.D.	
		DBP	/	N.D.	

236	Metal wire of L2 fuse	Pb	BL	/	Pass
		Cd	BL	/	
		Hg	BL	/	
		Cr(Cr(VI))	BL	/	
		Br(PBBs&PBDEs)	/	/	
		DIBP	/	/	
		DEHP	/	/	
		BBP	/	/	
237	Metal pin of L2 fuse	Pb	BL	/	Pass
		Cd	BL	/	
		Hg	BL	/	
		Cr(Cr(VI))	BL	/	
		Br(PBBs&PBDEs)	/	/	
		DIBP	/	/	
		DEHP	/	/	
		BBP	/	/	
238	Black casing tube of L2 fuse	Pb	BL	/	Pass
		Cd	BL	/	
		Hg	BL	/	
		Cr(Cr(VI))	BL	/	
		Br(PBBs&PBDEs)	BL	/	
		DIBP	/	N.D.	
		DEHP	/	N.D.	
		BBP	/	N.D.	
239	Silvery metal sheet	Pb	BL	/	Pass
		Cd	BL	/	
		Hg	BL	/	
		Cr(Cr(VI))	IN	N.D.	
		Br(PBBs&PBDEs)	/	/	
		DIBP	/	/	
		DEHP	/	/	
		BBP	/	/	
DBP	/	/			

240	Aluminum shell of C1 electrolytic capacitor	Pb	BL	/	Pass
		Cd	BL	/	
		Hg	BL	/	
		Cr(Cr(VI))	BL	/	
		Br(PBBs&PBDEs)	/	/	
		DIBP	/	/	
		DEHP	/	/	
		BBP	/	/	
241	Anode foil of C1 electrolytic capacitor	Pb	BL	/	Pass
		Cd	BL	/	
		Hg	BL	/	
		Cr(Cr(VI))	BL	/	
		Br(PBBs&PBDEs)	/	/	
		DIBP	/	/	
		DEHP	/	/	
		BBP	/	/	
242	Cathode foil of C1 electrolytic capacitor	Pb	BL	/	Pass
		Cd	BL	/	
		Hg	BL	/	
		Cr(Cr(VI))	BL	/	
		Br(PBBs&PBDEs)	/	/	
		DIBP	/	/	
		DEHP	/	/	
		BBP	/	/	
243	Electrolytic paper of C1 electrolytic capacitor	Pb	BL	/	Pass
		Cd	BL	/	
		Hg	BL	/	
		Cr(Cr(VI))	BL	/	
		Br(PBBs&PBDEs)	BL	/	
		DIBP	/	N.D.	
		DEHP	/	N.D.	
		BBP	/	N.D.	
DBP	/	N.D.			

244	Rubber blanket of C1 electrolytic capacitor	Pb	BL	/	Pass
		Cd	BL	/	
		Hg	BL	/	
		Cr(Cr(VI))	BL	/	
		Br(PBBs&PBDEs)	BL	/	
		DIBP	/	N.D.	
		DEHP	/	N.D.	
		BBP	/	N.D.	
245	Metal pin of C1 electrolytic capacitor	Pb	BL	/	Pass
		Cd	BL	/	
		Hg	BL	/	
		Cr(Cr(VI))	BL	/	
		Br(PBBs&PBDEs)	/	/	
		DIBP	/	/	
		DEHP	/	/	
		BBP	/	/	
246	Plastic jacket of C1 electrolytic capacitor	Pb	BL	/	Pass
		Cd	BL	/	
		Hg	BL	/	
		Cr(Cr(VI))	BL	/	
		Br(PBBs&PBDEs)	BL	/	
		DIBP	/	N.D.	
		DEHP	/	N.D.	
		BBP	/	N.D.	
247	Aluminum shell of electrolytic capacitor	Pb	BL	/	Pass
		Cd	BL	/	
		Hg	BL	/	
		Cr(Cr(VI))	BL	/	
		Br(PBBs&PBDEs)	/	/	
		DIBP	/	/	
		DEHP	/	/	
		BBP	/	/	
DBP	/	/			

248	Anode foil of electrolytic capacitor	Pb	BL	/	Pass
		Cd	BL	/	
		Hg	BL	/	
		Cr(Cr(VI))	BL	/	
		Br(PBBs&PBDEs)	/	/	
		DIBP	/	/	
		DEHP	/	/	
		BBP	/	/	
		DBP	/	/	
249	Cathode foil of electrolytic capacitor	Pb	BL	/	Pass
		Cd	BL	/	
		Hg	BL	/	
		Cr(Cr(VI))	BL	/	
		Br(PBBs&PBDEs)	/	/	
		DIBP	/	/	
		DEHP	/	/	
		BBP	/	/	
		DBP	/	/	
250	Electrolytic paper of electrolytic capacitor	Pb	BL	/	Pass
		Cd	BL	/	
		Hg	BL	/	
		Cr(Cr(VI))	BL	/	
		Br(PBBs&PBDEs)	BL	/	
		DIBP	/	N.D.	
		DEHP	/	N.D.	
		BBP	/	N.D.	
		DBP	/	N.D.	
251	Rubber blanket of electrolytic capacitor	Pb	BL	/	Pass
		Cd	BL	/	
		Hg	BL	/	
		Cr(Cr(VI))	BL	/	
		Br(PBBs&PBDEs)	BL	/	
		DIBP	/	N.D.	
		DEHP	/	N.D.	
		BBP	/	N.D.	
		DBP	/	N.D.	

252	Metal pin of electrolytic capacitor	Pb	BL	/	Pass
		Cd	BL	/	
		Hg	BL	/	
		Cr(Cr(VI))	BL	/	
		Br(PBBs&PBDEs)	/	/	
		DIBP	/	/	
		DEHP	/	/	
		DBP	/	/	
253	Plastic jacket of electrolytic capacitor	Pb	BL	/	Pass
		Cd	BL	/	
		Hg	BL	/	
		Cr(Cr(VI))	BL	/	
		Br(PBBs&PBDEs)	BL	/	
		DIBP	/	N.D.	
		DEHP	/	N.D.	
		DBP	/	N.D.	
254	Plastic framework of transformer	Pb	BL	/	Pass
		Cd	BL	/	
		Hg	BL	/	
		Cr(Cr(VI))	BL	/	
		Br(PBBs&PBDEs)	BL	/	
		DIBP	/	N.D.	
		DEHP	/	N.D.	
		DBP	/	N.D.	
255	Magnetic core of transformer	Pb	BL	/	Pass
		Cd	BL	/	
		Hg	BL	/	
		Cr(Cr(VI))	BL	/	
		Br(PBBs&PBDEs)	/	/	
		DIBP	/	/	
		DEHP	/	/	
		DBP	/	/	

256	Cupreous coil of transformer	Pb	BL	/	Pass
		Cd	BL	/	
		Hg	BL	/	
		Cr(Cr(VI))	BL	/	
		Br(PBBs&PBDEs)	/	/	
		DIBP	/	/	
		DEHP	/	/	
		BBP	/	/	
		DBP	/	/	
257	varnished wire of transformer	Pb	BL	/	Pass
		Cd	BL	/	
		Hg	BL	/	
		Cr(Cr(VI))	BL	/	
		Br(PBBs&PBDEs)	BL	/	
		DIBP	/	N.D.	
		DEHP	/	N.D.	
		BBP	/	N.D.	
		DBP	/	N.D.	
258	Metal pin of transformer	Pb	BL	/	Pass
		Cd	BL	/	
		Hg	BL	/	
		Cr(Cr(VI))	BL	/	
		Br(PBBs&PBDEs)	/	/	
		DIBP	/	/	
		DEHP	/	/	
		BBP	/	/	
		DBP	/	/	
259	Transparent casing tube of transformer	Pb	BL	/	Pass
		Cd	BL	/	
		Hg	BL	/	
		Cr(Cr(VI))	BL	/	
		Br(PBBs&PBDEs)	BL	/	
		DIBP	/	N.D.	
		DEHP	/	N.D.	
		BBP	/	N.D.	
		DBP	/	N.D.	

260	Yellow tape of transformer	Pb	BL	/	Pass
		Cd	BL	/	
		Hg	BL	/	
		Cr(Cr(VI))	BL	/	
		Br(PBBs&PBDEs)	BL	/	
		DIBP	/	N.D.	
		DEHP	/	N.D.	
		BBP	/	N.D.	
261	Aluminum shell of C6 electrolytic capacitor	Pb	BL	/	Pass
		Cd	BL	/	
		Hg	BL	/	
		Cr(Cr(VI))	BL	/	
		Br(PBBs&PBDEs)	/	/	
		DIBP	/	/	
		DEHP	/	/	
		BBP	/	/	
262	Anode foil of C6 electrolytic capacitor	Pb	BL	/	Pass
		Cd	BL	/	
		Hg	BL	/	
		Cr(Cr(VI))	BL	/	
		Br(PBBs&PBDEs)	/	/	
		DIBP	/	/	
		DEHP	/	/	
		BBP	/	/	
263	Cathode foil of C6 electrolytic capacitor	Pb	BL	/	Pass
		Cd	BL	/	
		Hg	BL	/	
		Cr(Cr(VI))	BL	/	
		Br(PBBs&PBDEs)	/	/	
		DIBP	/	/	
		DEHP	/	/	
		BBP	/	/	
DBP	/	/			

264	Electrolytic paper of C6 electrolytic capacitor	Pb	BL	/	Pass
		Cd	BL	/	
		Hg	BL	/	
		Cr(Cr(VI))	BL	/	
		Br(PBBs&PBDEs)	BL	/	
		DIBP	/	N.D.	
		DEHP	/	N.D.	
		BBP	/	N.D.	
265	Rubber blanket of C6 electrolytic capacitor	Pb	BL	/	Pass
		Cd	BL	/	
		Hg	BL	/	
		Cr(Cr(VI))	BL	/	
		Br(PBBs&PBDEs)	BL	/	
		DIBP	/	N.D.	
		DEHP	/	N.D.	
		BBP	/	N.D.	
266	Metal pin of C6 electrolytic capacitor	Pb	BL	/	Pass
		Cd	BL	/	
		Hg	BL	/	
		Cr(Cr(VI))	BL	/	
		Br(PBBs&PBDEs)	/	/	
		DIBP	/	/	
		DEHP	/	/	
		BBP	/	/	
267	Silvery metal shell of USB slot	Pb	BL	/	Pass
		Cd	BL	/	
		Hg	BL	/	
		Cr(Cr(VI))	BL	/	
		Br(PBBs&PBDEs)	/	/	
		DIBP	/	/	
		DEHP	/	/	
		BBP	/	/	
DBP	/	/			

268	Metal contact sheet of USB slot	Pb	BL	/	Pass
		Cd	BL	/	
		Hg	BL	/	
		Cr(Cr(VI))	BL	/	
		Br(PBBs&PBDEs)	/	/	
		DIBP	/	/	
		DEHP	/	/	
		BBP	/	/	
		DBP	/	/	
269	White plastic of USB slot	Pb	BL	/	Pass
		Cd	BL	/	
		Hg	BL	/	
		Cr(Cr(VI))	BL	/	
		Br(PBBs&PBDEs)	BL	/	
		DIBP	/	N.D.	
		DEHP	/	N.D.	
		BBP	/	N.D.	
		DBP	/	N.D.	
270	Blue body of CY1 capacitor	Pb	BL	/	Pass
		Cd	BL	/	
		Hg	BL	/	
		Cr(Cr(VI))	BL	/	
		Br(PBBs&PBDEs)	BL	/	
		DIBP	/	N.D.	
		DEHP	/	N.D.	
		BBP	/	N.D.	
		DBP	/	N.D.	
271	Metal pin of CY1 capacitor	Pb	BL	/	Pass
		Cd	BL	/	
		Hg	BL	/	
		Cr(Cr(VI))	BL	/	
		Br(PBBs&PBDEs)	/	/	
		DIBP	/	/	
		DEHP	/	/	
		BBP	/	/	
		DBP	/	/	

272	Aluminum shell of C10 electrolytic capacitor	Pb	BL	/	Pass
		Cd	BL	/	
		Hg	BL	/	
		Cr(Cr(VI))	BL	/	
		Br(PBBs&PBDEs)	/	/	
		DIBP	/	/	
		DEHP	/	/	
		BBP	/	/	
273	Anode foil of C10 electrolytic capacitor	Pb	BL	/	Pass
		Cd	BL	/	
		Hg	BL	/	
		Cr(Cr(VI))	BL	/	
		Br(PBBs&PBDEs)	/	/	
		DIBP	/	/	
		DEHP	/	/	
		BBP	/	/	
274	Cathode foil of C10 electrolytic capacitor	Pb	BL	/	Pass
		Cd	BL	/	
		Hg	BL	/	
		Cr(Cr(VI))	BL	/	
		Br(PBBs&PBDEs)	/	/	
		DIBP	/	/	
		DEHP	/	/	
		BBP	/	/	
275	Electrolytic paper of C10 electrolytic capacitor	Pb	BL	/	Pass
		Cd	BL	/	
		Hg	BL	/	
		Cr(Cr(VI))	BL	/	
		Br(PBBs&PBDEs)	BL	/	
		DIBP	/	N.D.	
		DEHP	/	N.D.	
		BBP	/	N.D.	
DBP	/	N.D.			

276	Rubber blanket of C10 electrolytic capacitor	Pb	BL	/	Pass
		Cd	BL	/	
		Hg	BL	/	
		Cr(Cr(VI))	BL	/	
		Br(PBBs&PBDEs)	BL	/	
		DIBP	/	N.D.	
		DEHP	/	N.D.	
		BBP	/	N.D.	
277	Metal pin of C10 electrolytic capacitor	Pb	BL	/	Pass
		Cd	BL	/	
		Hg	BL	/	
		Cr(Cr(VI))	BL	/	
		Br(PBBs&PBDEs)	/	/	
		DIBP	/	/	
		DEHP	/	/	
		BBP	/	/	
278	Plastic jacket of C10 electrolytic capacitor	Pb	BL	/	Pass
		Cd	BL	/	
		Hg	BL	/	
		Cr(Cr(VI))	BL	/	
		Br(PBBs&PBDEs)	BL	/	
		DIBP	/	N.D.	
		DEHP	/	N.D.	
		BBP	/	N.D.	
279	Magnetic core of L1 cylindrical inductance	Pb	BL	/	Pass
		Cd	BL	/	
		Hg	BL	/	
		Cr(Cr(VI))	IN	N.D.	
		Br(PBBs&PBDEs)	/	/	
		DIBP	/	/	
		DEHP	/	/	
		BBP	/	/	
DBP	/	/			

280	Cupreous coil of L1 cylindrical inductance	Pb	BL	/	Pass
		Cd	BL	/	
		Hg	BL	/	
		Cr(Cr(VI))	BL	/	
		Br(PBBs&PBDEs)	/	/	
		DIBP	/	/	
		DEHP	/	/	
		BBP	/	/	
		DBP	/	/	
281	Black plastic casing tube of L1 cylindrical inductance	Pb	BL	/	Pass
		Cd	BL	/	
		Hg	BL	/	
		Cr(Cr(VI))	BL	/	
		Br(PBBs&PBDEs)	BL	/	
		DIBP	/	N.D.	
		DEHP	/	N.D.	
		BBP	/	N.D.	
		DBP	/	N.D.	
282	Black body of BD1 bridge rectifier	Pb	BL	/	Pass
		Cd	BL	/	
		Hg	BL	/	
		Cr(Cr(VI))	BL	/	
		Br(PBBs&PBDEs)	BL	/	
		DIBP	/	N.D.	
		DEHP	/	N.D.	
		BBP	/	N.D.	
		DBP	/	N.D.	
283	Metal pin of BD1 bridge rectifier	Pb	BL	/	Pass
		Cd	BL	/	
		Hg	BL	/	
		Cr(Cr(VI))	BL	/	
		Br(PBBs&PBDEs)	/	/	
		DIBP	/	/	
		DEHP	/	/	
		BBP	/	/	
		DBP	/	/	

284	U1 chip	Pb	BL	/	Pass
		Cd	BL	/	
		Hg	BL	/	
		Cr(Cr(VI))	BL	/	
		Br(PBBs&PBDEs)	BL	/	
		DIBP	/	N.D.	
		DEHP	/	N.D.	
		BBP	/	N.D.	
		DBP	/	N.D.	
285	SMD resistor of SMD	Pb	BL	/	Pass
		Cd	BL	/	
		Hg	BL	/	
		Cr(Cr(VI))	BL	/	
		Br(PBBs&PBDEs)	BL	/	
		DIBP	/	N.D.	
		DEHP	/	N.D.	
		BBP	/	N.D.	
		DBP	/	N.D.	
286	SMD capacitor of SMD	Pb	BL	/	Pass
		Cd	BL	/	
		Hg	BL	/	
		Cr(Cr(VI))	BL	/	
		Br(PBBs&PBDEs)	BL	/	
		DIBP	/	N.D.	
		DEHP	/	N.D.	
		BBP	/	N.D.	
		DBP	/	N.D.	
287	SMD diode of SMD	Pb	3350 ^{#2}	/	Pass
		Cd	BL	/	
		Hg	BL	/	
		Cr(Cr(VI))	BL	/	
		Br(PBBs&PBDEs)	BL	/	
		DIBP	/	N.D.	
		DEHP	/	N.D.	
		BBP	/	N.D.	
		DBP	/	N.D.	

288	Tin solder	Pb	BL	/	Pass
		Cd	BL	/	
		Hg	BL	/	
		Cr(Cr(VI))	BL	/	
		Br(PBBs&PBDEs)	/	/	
		DIBP	/	/	
		DEHP	/	/	
		BBP	/	/	
		DBP	/	/	

Note:

- 1.N.D. = Not Detected (<MDL) MDL = Method Detection Limit
mg/kg = ppm =0.0001% / =Not Regulated or Not Applicable
2. BL = Under the XRF screening limit
IN = Further chemical test will be conducted when the screening result inconclusive
OL = Further chemical test will be conducted while the result is above the screening limit.
3. For metal samples, the sample is negative for Cr(VI), if the Cr(VI) concentration is less than 0.10 $\mu\text{g}/\text{cm}^2$, the coating is considered a non- Cr(VI) based coating;
The sample is positive for Cr(VI), if the Cr(VI) concentration is greater than 0.13 $\mu\text{g}/\text{cm}^2$,
The sample coating is considered to contain Cr(VI);
The result is considered to be inconclusive, the Cr(VI) concentration is between the 0.10 $\mu\text{g}/\text{cm}^2$ and 0.13 $\mu\text{g}/\text{cm}^2$,Unavoidable coating variations may influence the determination.
Because the storage condition and production date of the sample are not known, the test results of the sample of hexavalent chromium can only represent the state of hexavalent chromium in the samples tested.

Remark:

1. The screening results are only used for reference.
2. When conducting the test for PBBs&PBDEs, XRF was introduced to screen Br Exclusively; When conducting the test for Hexavalent Chromium, XRF was introduced to screen Chromium exclusively.
3. According to the client's statement , the material of the sample(s) comply with RoHS directive 2011/65/EU Annex III Exemption, Corresponding exemption clause:
#1 6(c) Lead is exempted as copper alloy containing up to 4% lead by weight .
#2 7(c)-I Lead is exempted as Electrical and electronic components containing lead in a glass
4. Part No.165, 207 Resubmitted Date: 2021-03-18.

Test Method:

when screening results exceed the XRF screening limit in IEC62321-3-1: 2013, further use of chemical methods are required to test the Lead(Pb), Cadmium(Cd), Mercury(Hg), Hexavalent Chromium(Cr(VI)), Polybrominated Biphenyls(PBBs) and Polybrominated Diphenyl Ethers(PBDEs)

1. XRF screening limits in mg/kg for regulated elements according to IEC 62321-3-1:2013

Element	Limit of IEC 62321-3-1:2013 (mg/kg)		
	Polymers	Metals	Composite material
Pb	BL≤(700-3σ) <X <(1300+3σ)≤OL	BL≤(700-3σ) <X <(1300+3σ)≤OL	BL≤(500-3σ)<X <(1500+3σ)≤OL
Cd	BL≤(70-3σ)<X < (130+3σ) ≤OL	BL≤(70-3σ)<X < (130+3σ) ≤OL	LOD <X<(150+3σ) ≤OL
Hg	BL≤(700-3σ)<X <(1300+3σ)≤OL	BL≤(700-3σ)<X <(1300+3σ)≤OL	BL≤(500-3σ)<X <(1500+3σ)≤OL
Cr	BL≤(700-3σ)< X	BL≤(700-3σ)< X	BL≤(500-3σ)< X
Br	BL≤(300-3σ)< X	/	BL≤(250-3σ)< X

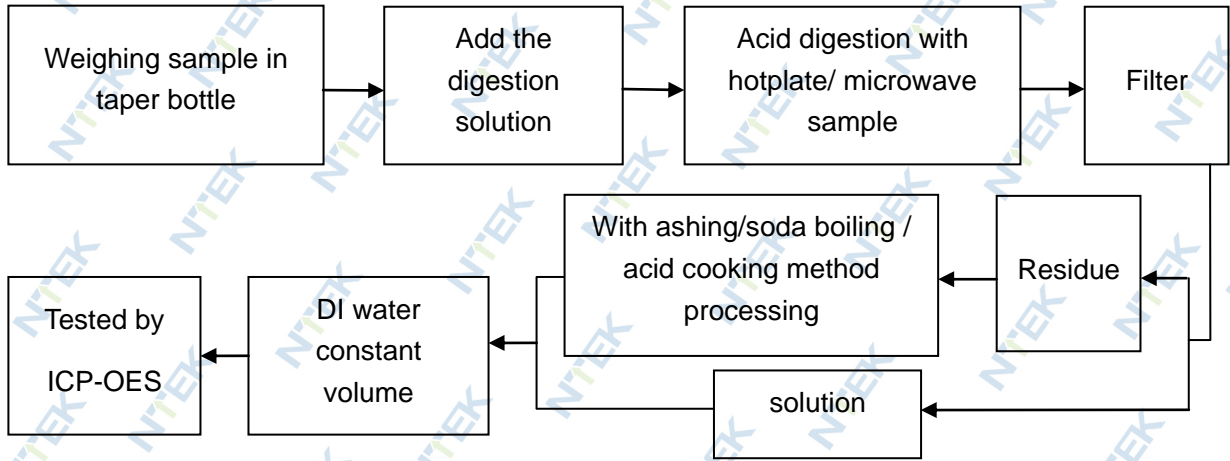
Note: BL=Under the XRF screening limit OL=Over the XRF screening limit
 X=The symbol "X" marks the region where further investigation is necessary.
 3σ =The reproducibility of analytical instruments LOD= Detection limit

2. Chemical Test

Test item	Test method	Test instrument	MDL	Limit
Lead (Pb)	IEC 62321-5:2013 Ed.1.0	ICP-OES	10 mg/kg	1000 mg/kg
Cadmium (Cd)	IEC 62321-5:2013 Ed.1.0	ICP-OES	10 mg/kg	100 mg/kg
Mercury (Hg)	IEC 62321-4:2013+AMD1:2017	ICP-OES	10 mg/kg	1000 mg/kg
Hexavalent Chromium(Cr(VI))	IEC62321-7-1:2015 Ed.1.0	UV-Vis	0.10 μg/cm ²	1000 mg/kg
	IEC 62321-7-2:2017 Ed.1.0		10 mg/kg	
Polybrominated Biphenyls(PBBs)	IEC 62321-6:2015 Ed.1.0	GC-MS	100 mg/kg	1000 mg/kg
Polybrominated, Diphenyl Ethers(PBDEs)	IEC 62321-6:2015 Ed.1.0	GC-MS	100 mg/kg	1000 mg/kg
Bis-(2-ethylhexyl) Phthalate (DEHP)	IEC 62321-8:2017 Ed.1.0	GC-MS	50 mg/kg	1000 mg/kg
Benzyl butyl Phthalate (BBP)	IEC 62321-8:2017 Ed.1.0	GC-MS	50 mg/kg	1000 mg/kg
Dibutyl Phthalate (DBP)	IEC 62321-8:2017 Ed.1.0	GC-MS	50 mg/kg	1000 mg/kg
Diisobutyl Phthalate(DIBP)	IEC 62321-8:2017 Ed.1.0	GC-MS	50 mg/kg	1000 mg/kg

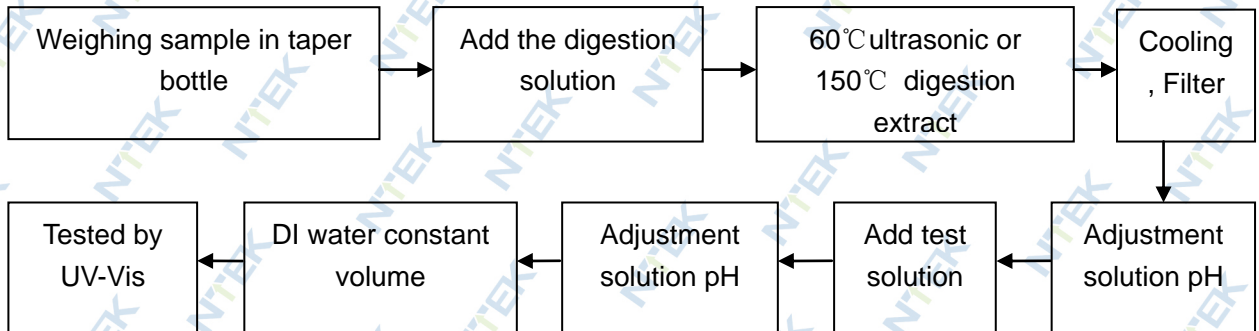
Test Flow:

1. Lead(Pb), Cadmium(Cd), Mercury (Hg)

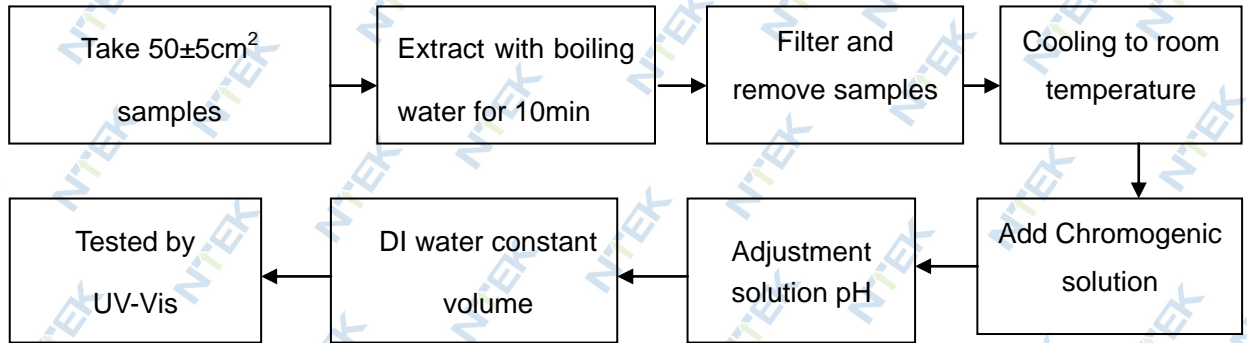


2. Hexavalent Chromium(Cr(VI))

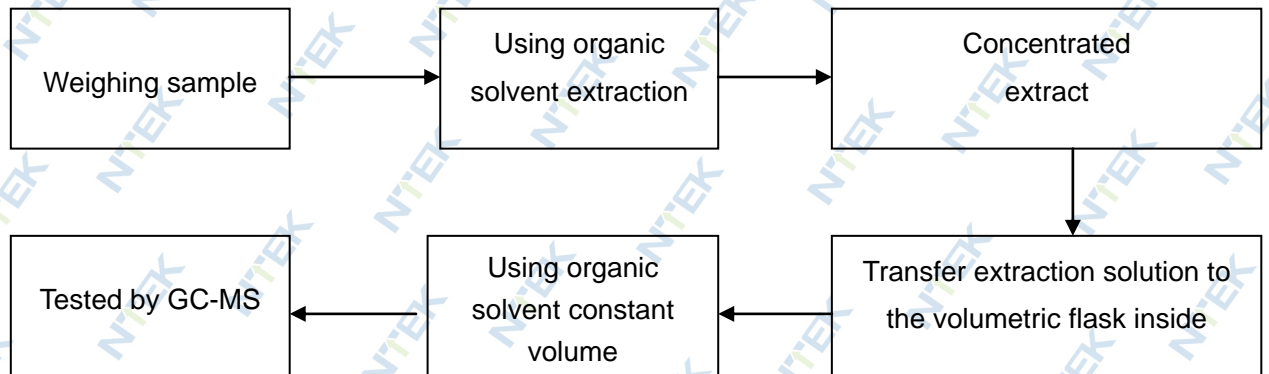
2.1 Non- metal sample(s)



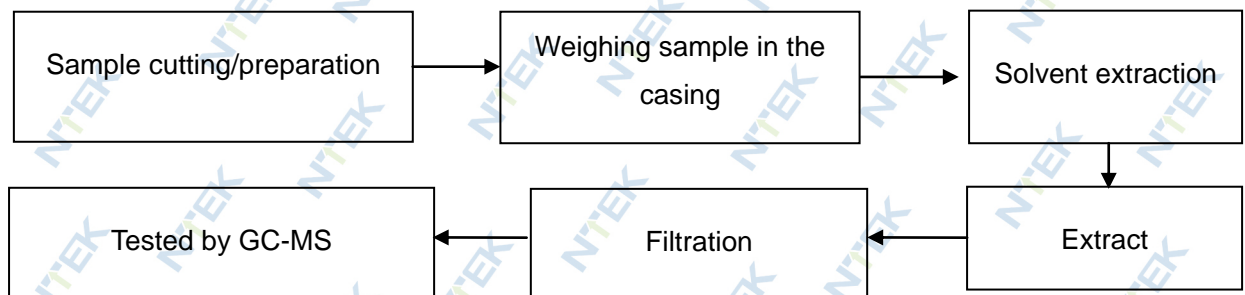
2.2 Metal sample(s)



3. PBBs/ PBDEs



4. Phthalates



Sample photo(s):



Fig.1



Fig.2



Fig.3



Fig.4



Fig.5

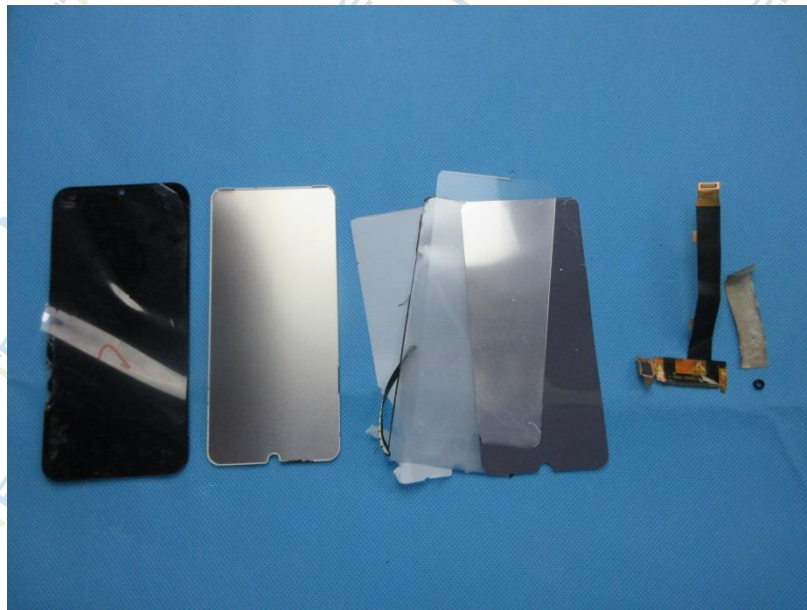


Fig.6

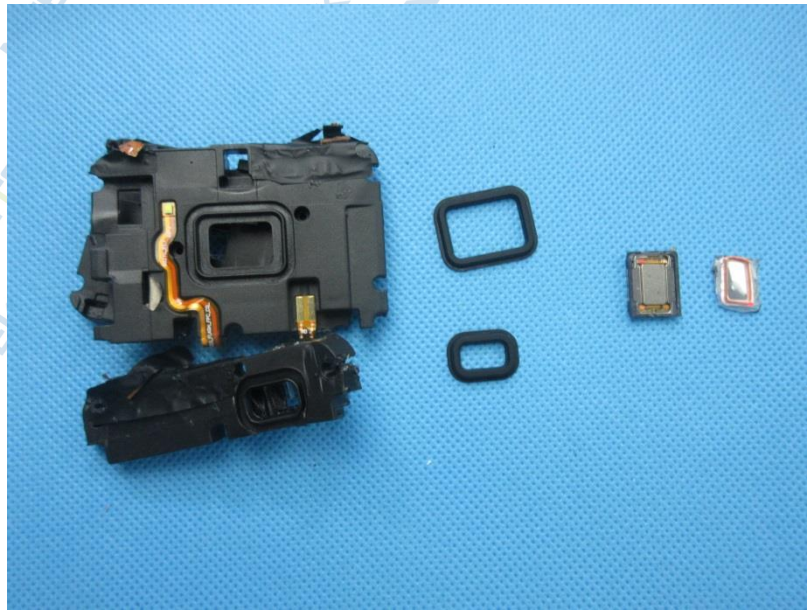


Fig.7

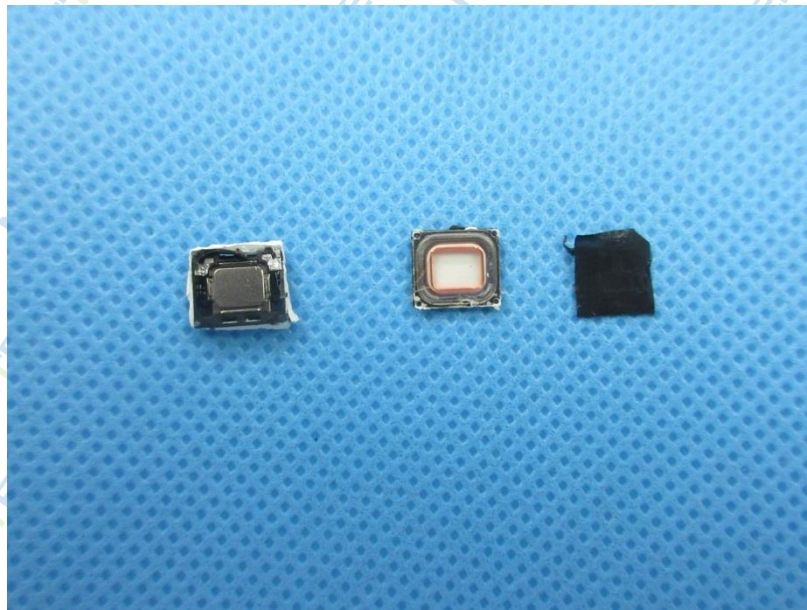


Fig.8

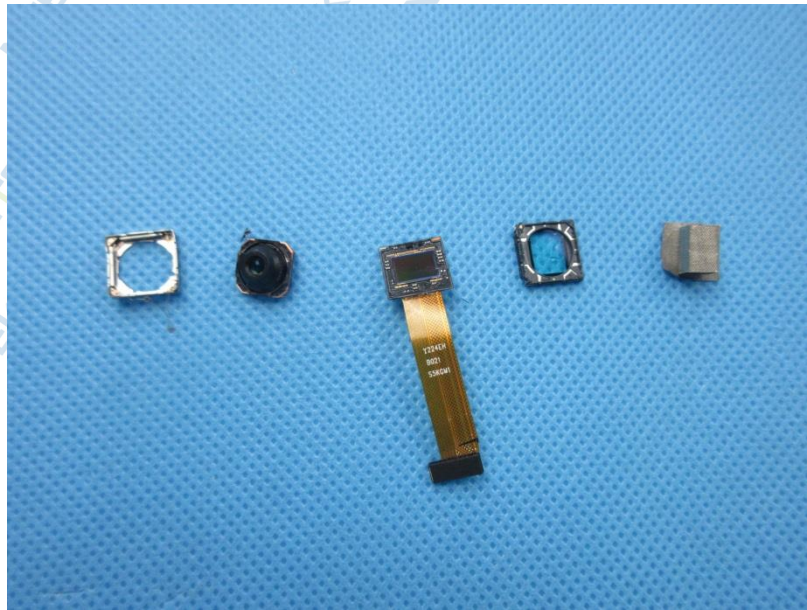


Fig.9

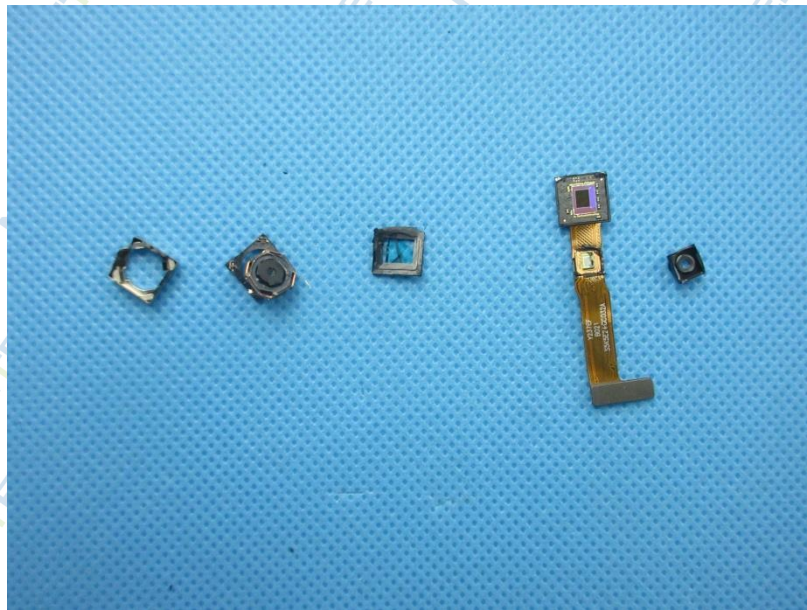


Fig.10

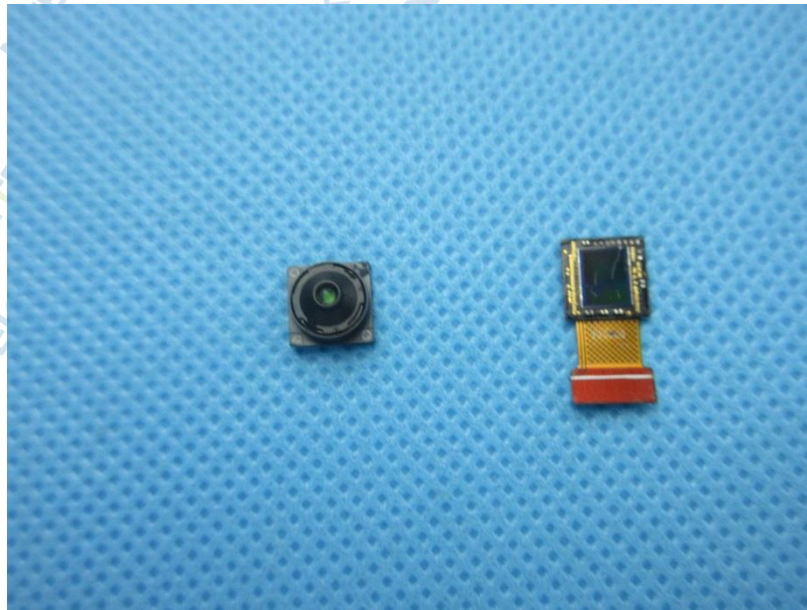


Fig.11



Fig.12

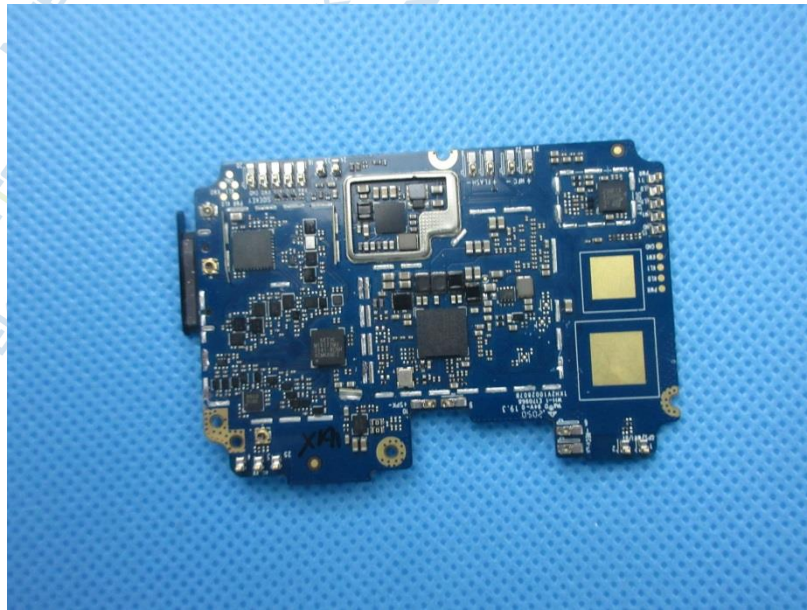


Fig.13

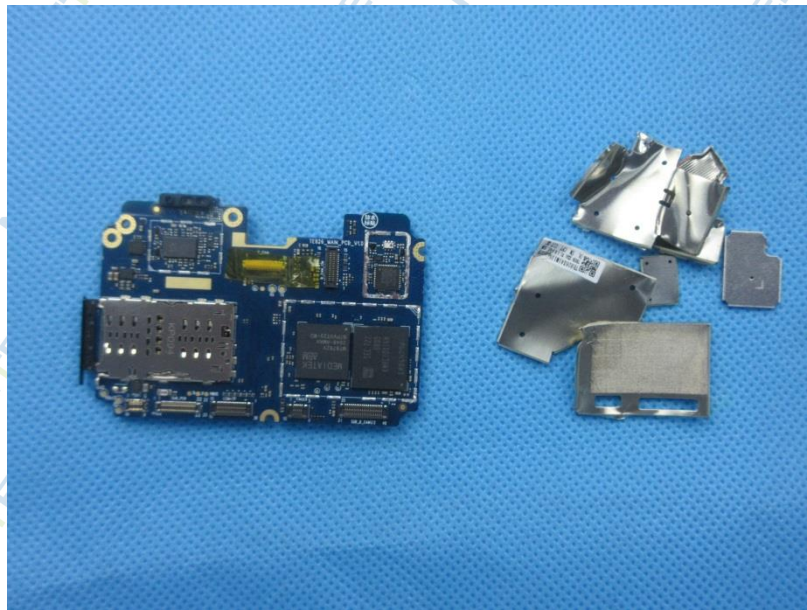


Fig.14

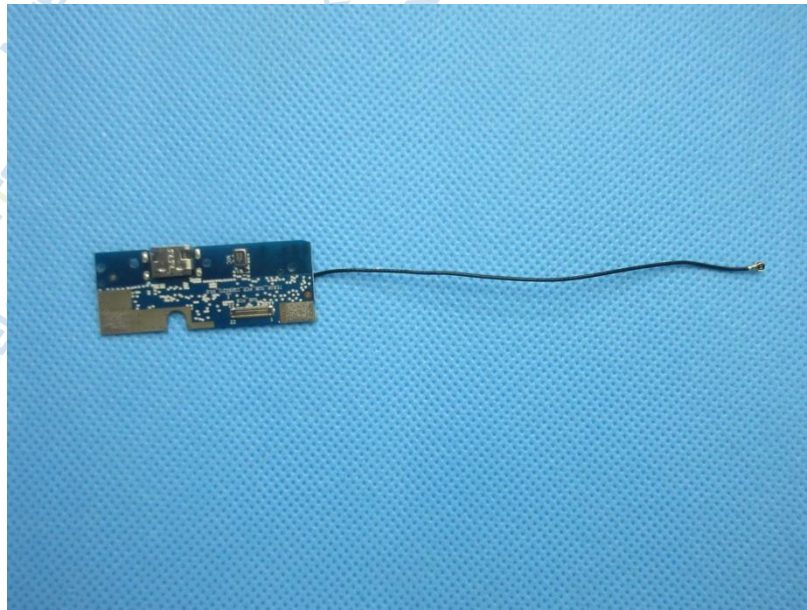


Fig.15

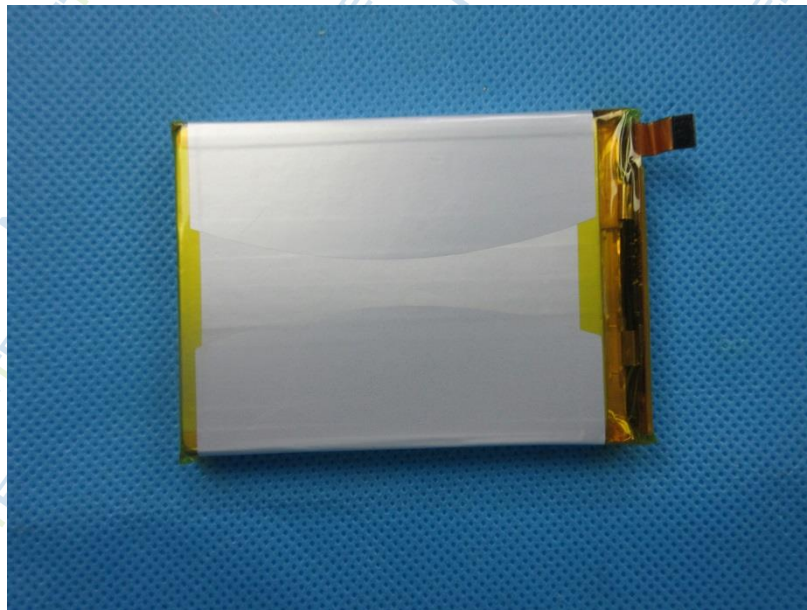


Fig.16

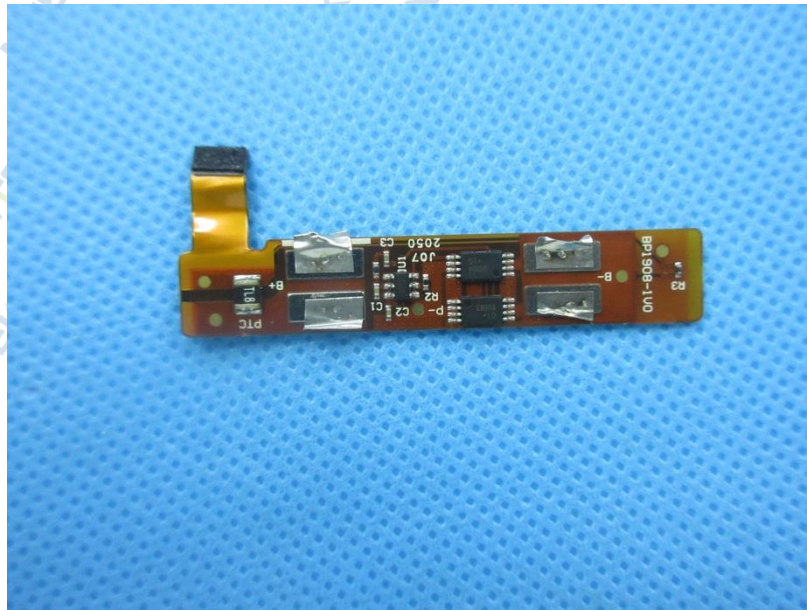


Fig.17

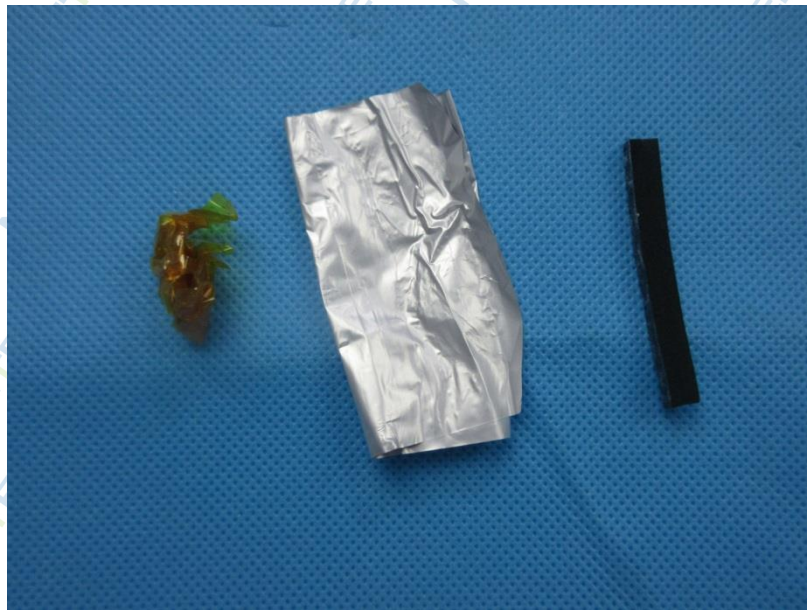


Fig.18



Fig.19



Fig.20

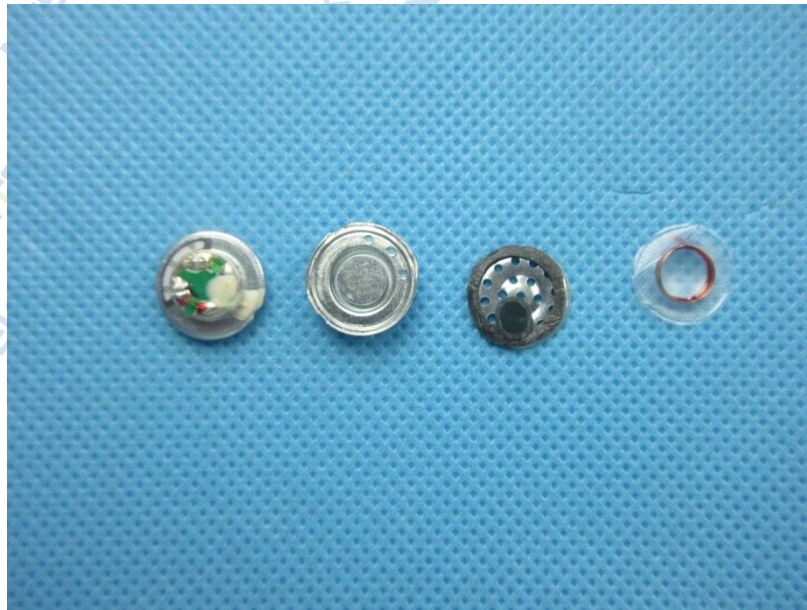


Fig.21



Fig.22

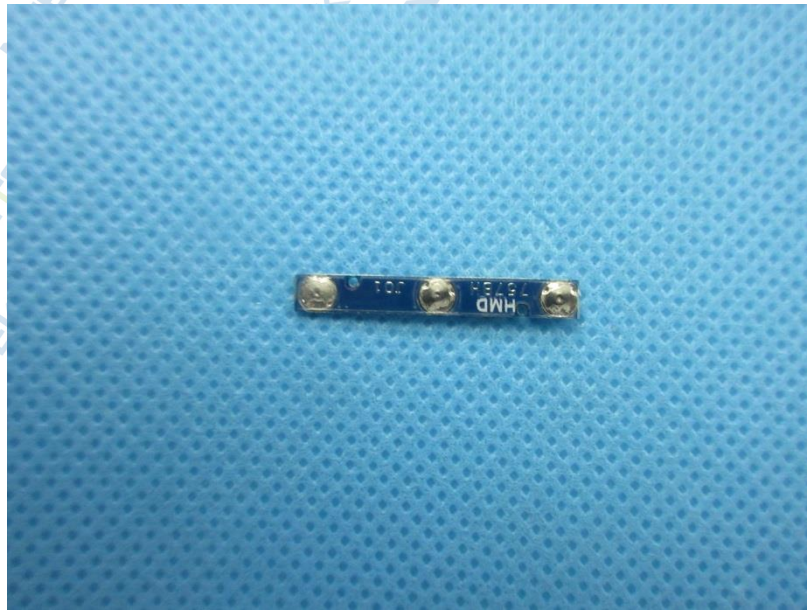


Fig.23



Fig.24



Fig.25



Fig.26

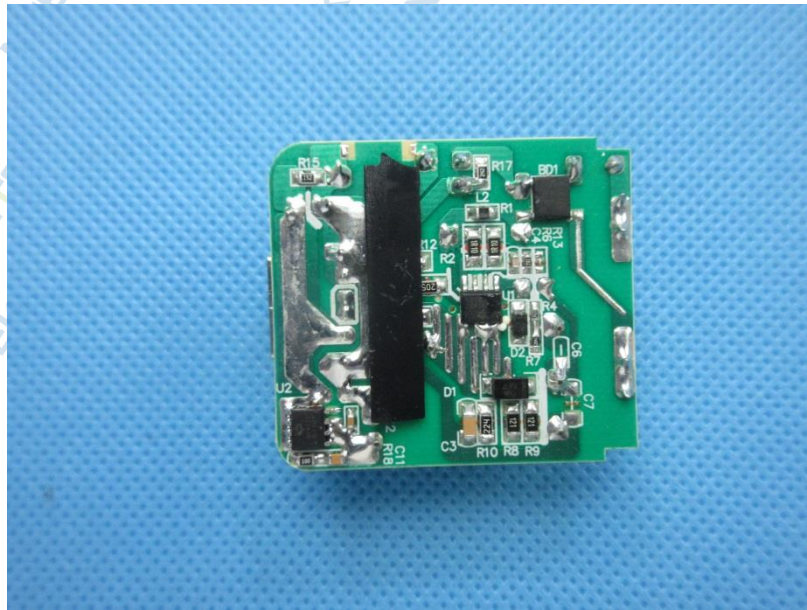


Fig.27



Fig.28

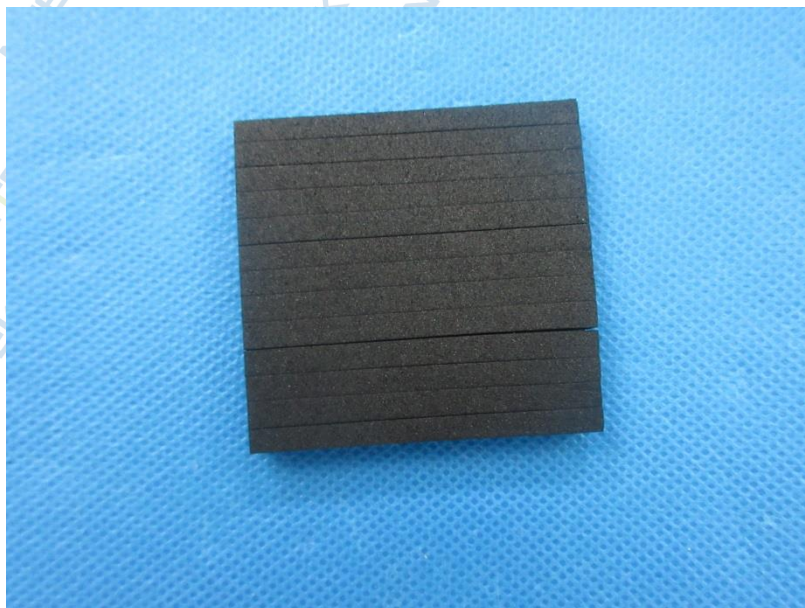


Fig.29

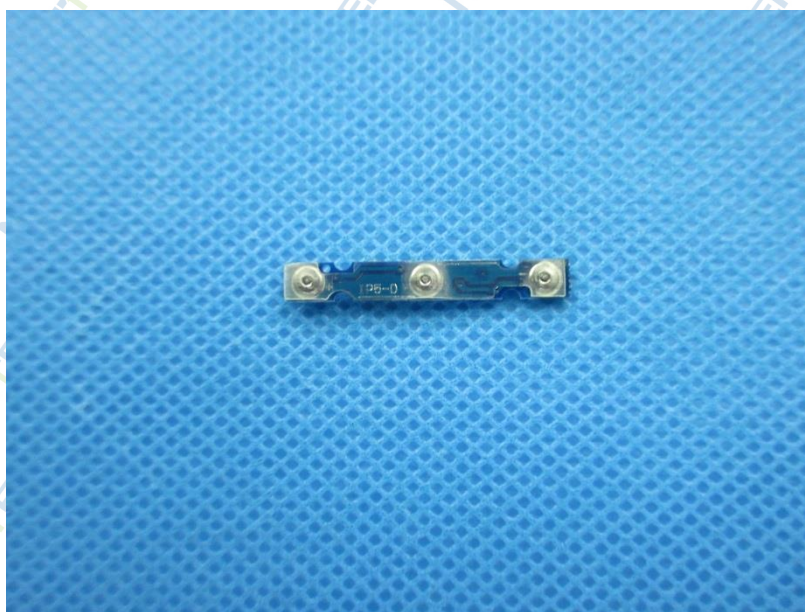


Fig.30

****End of Report****

The test report is effective only with both signature and specialized stamp, the result(s) shown in this report refer only to the sample(s) tested. Without written approval of NTEK, this report can't be reproduced except in full.